



**Welcome
Back to School
2020-2021**

From the Superintendent...

**WOODFORD COUNTY
PUBLIC SCHOOLS**



Where Great Minds Meet

Dear Woodford County Families,

I believe it goes without saying that this school year will be unlike any other we have experienced. With temperature checks, masks, and the option for an entirely virtual learning experience, it is easy to think that nothing will be the same with this school year. I want to reassure you that despite all of the unusual circumstances we will see this year, the most important things will stay the same: students will be loved; students will be put first in all decisions; students will receive a tremendous education and unique opportunities.

Our teachers, administrators, and staff have spent this summer reflecting on this past spring, planning for the upcoming school year, and researching to ensure that we move forward in the safest, most effective way possible. The mission of Woodford County Public Schools remains the same: to provide challenging learning opportunities for all kids and to help our students strive for excellence in every endeavor. In order to achieve this goal, students must also receive social emotional learning, which is critical to helping them grow and mature, process life experiences, form positive relationships, and so much more. Though this has always been a major focus in our district, we are prepared to utilize social emotional learning to face the challenges that public education has faced due to COVID-19.

Family engagement has always been a key component to student success, but we are looking forward to an even deeper partnership with our families this year and moving forward. From transitioning into a different school environment to experiencing virtual learning, if your family opts for this, to processing through various emotions, your student will need you to encourage them and help them through this journey. With Woodford County teachers, administrators, staff, and families all working together, I am confident that we can make this a meaningful, impactful year for our students.

Woodford County has a unique combination of outstanding teachers and staff, an extraordinary student body, and a caring community. This trio makes Woodford County a special place, and I am honored to serve as your superintendent.

Let me leave you with this: We Are Woodford. Though this year will bring challenges, it will also bring great achievements and worthwhile moments with our students; the 2020-2021 school year will certainly remind us of the importance and beauty of coming together to support one another.

Sincerely,
Scott Hawkins

Woodford County Board of Education Meeting Dates for 2020

Meeting dates for the Woodford County Board of Education are scheduled as follows for the remainder of 2020. All meetings will begin at 6:00 p.m.

| | |
|--------------------------------|------------------------|
| August 24 (Regular) | 330 Pisgah Pike |
| September 21 (Planning) | 330 Pisgah Pike |
| September 28 (Regular) | WCMS |
| October 19 (Planning) | 330 Pisgah Pike |
| October 26 (Regular) | Simmons |
| November 9 (Planning) | 330 Pisgah Pike |
| November 16 (Regular) | WCHS |
| December 7 (Planning) | 330 Pisgah Pike |
| December 14 (Regular) | 330 Pisgah Pike |



WOODFORD COUNTY BOARD OF EDUCATION MEMBERS: From left, Schools Superintendent Scott Hawkins, Board Chair Debby Edelen, Board Vice Chair Dani Bradley, Allison Richardson, Sherri Springate and Ambrose Wilson IV. (File photo submitted in June 2019)

Administrative Team

Board Office



Scott
Hawkins



Ryan
Asher



Elaine
Bailey



Tracey
Francis



Bob
Gibson



Martha
Jones



Garett
Wells

Huntertown



Elaine
Kaiser



Amanda
Nugent



Scott
Hundley



Shelby
Ison



Tiffany
Cook



Ryan
Wilson

Northside

Simmons

Southside



Jeremy
Reynolds



David
Beaty

WCMS



Liz
Kirk



Susan
Tracy



Morgan
Howell



Kevin
Faris



Jennifer
Forgy

WCHS

Safe Harbor



Logan
Culbertson

Other



Kay
Penn



Courtney
Quire



Kathy
Hogg

Pictured, top row, left, Superintendent Scott Hawkins, Chief Academic Officer Ryan Asher, Information & Communications Officer Elaine Bailey, Director of Special Education Tracey Francis, Chief Information Officer/Director of Technology Bob Gibson, Director of Student Achievement and District Assessment Coordinator Martha Jones and Director of Staff and Student Services Garett Wells; second row, left, Principal Elaine Kaiser, Administrative Dean Amanda Nugent, Principal Scott Hundley, Curriculum Coach Shelby Ison, Principal Tiffany Cook, Administrative Dean Ryan Wilson, Principal Jeremy Reynolds and Academic Dean David Beaty; third row, left, Interim Principal Liz Kirk, Assistant Principal & Athletic Director Susan Tracy, Principal Morgan Howell, Assistant Principals Kevin Faris and Jennifer Forgy, Principal Logan Culbertson; fourth row, left, Director of Transportation Kay Penn, Director of Food Services Courtney Quire and Coordinator of District-wide Programs/Preschool Director Kathy Hogg.

Back-to-School Events

A theme that has come up time and time again in our various planning meetings is the need to re-engage our students and families with back-to-school events. The circumstances certainly present some challenges in doing this, but all Woodford County schools are holding a variety of events focused on reconnecting with students and families, distributing Chromebooks/materials, and providing technology support. With so many variations needed in holding these events to follow health and safety guidelines, each school has communicated their plans and dates via their standard methods (One Call, email, web site, social media). If you have any questions about anything related to back-to-school, please contact your school for assistance.

WOODFORD CO. PRESCHOOL PROGRAM

School Readiness is the Key to the Future

Offered by Woodford County Public Schools, the Woodford County Preschool Program helps young children build a foundation for future academic success.

Preschool classes are offered in all four of the Woodford County elementary schools: Hometown, Northside, Simmons and Southside. Students attend preschool at the elementary school serving their district unless they are enrolled in the wrap-around day care. Students enrolled in the wrap-around day care attend preschool at Simmons Elementary.

Classes are held for half days in separate morning or afternoon sessions Monday through Thursday. Fridays are used for home visits, screenings, assessments, staff training and parent-teacher conferences. Free family fun activities focused on important learning concepts are offered in the evenings several times during the school year. Due to COVID-19 precautions, the class schedule may change, and preschoolers will also have an option to have virtual preschool online.

Preschool is open to children who will not turn 5 on or before August 1 of the current school year. Note these enrollment criteria:

- 3- and 4-year-olds identified as having a developmental delay can attend at no charge (preschool can provide screenings and testing to determine this).
- 4-year-olds who meet income guidelines can attend at no charge. They must turn 4 on or before August 1.
- 4-year-olds who are not eligible for free services can enroll as fee-paying students as space permits. For 2020-21 preschool, due to smaller class sizes for social distancing there will be fewer tuition enrollments available.
- Unlike past years, wrap-around daycare is not available.

The preschool program is top rated as a 5 Star facility by the Kentucky AllStars quality rating system. The teachers on staff are highly qualified with four year Early Childhood teaching degrees as well as advanced degrees. Each classroom is also staffed with a full-time instructional assistant. Students with therapy needs are served during their school day.

Preschool begins in late August/early September, but early enrollment is very important. Preschool applications should be available at each elementary school office and at the central office. If interested, please fill out a pre-application form on our website and our office will contact you to discuss next steps to determine eligibility (look on the left side of the webpage for the link) <https://www.woodford.kyschools.us/preschool-1a3c8f8d>

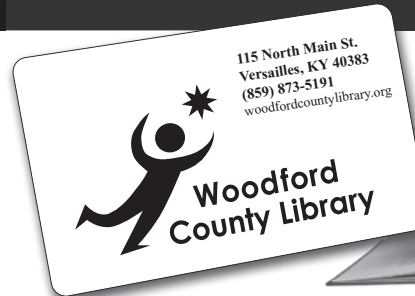
The preschool office is closed during the summer until early August, but email and phone messages are checked regularly. For information about free preschool screening, or preschool and day care enrollment, please visit or contact Clarita Murphy:

Phone: (859) 879-4699

E-mail: clarita.murphy@woodford.kyschools.us

Office Location: Simmons Elementary, 830 Tyrone Pike, Versailles, KY 40383

WE SUPPORT Woodford County Students and Teachers



www.woodfordcountylibrary.org

Main Library • 115 N. Main St., Versailles • 873-5191
Midway Branch • 400 Northside Dr., Midway • 846-4014

Just Say NO ... Just Say NO ... Just Say NO ...



D.A.R.E.
(Drug Abuse Resistance Education)

**Woodford County
Sheriff's Office
Encourages all kids to
Resist Peer Pressure and
JUST SAY NO!**

**D.A.R.E. gives kids the skills they need to avoid
involvement in drugs, gangs, and violence.**

Just Say NO ... Just Say NO ... Just Say NO ...

Just Say NO ... Just Say NO ... Just Say NO ...

Just Say NO ... Just Say NO ... Just Say NO ...

The Woodford County Public Schools believe these core values are an essential foundation to achieving the mission of the district.

Partnership—The Woodford County Public Schools will foster respectful, honest and caring relationships among students, families, staff and the community. We will establish a collaborative effort by all to achieve our common mission.

Respect—The Woodford County Public Schools will show consideration for all. We will seek to understand and accept our students' diverse needs while maintaining high expectations

Integrity—The Woodford County Public Schools is committed to making decisions based on what is best for students. We will have the courage to do what is right.

Determination—The Woodford County Public Schools will serve our students with an intentional purpose and tireless focus on student achievement. We are committed to preparing our students for productive citizenship.

Excellence—The Woodford County Public Schools is dedicated to achieving the highest standard in all that we do. Each employee will provide exemplary service to support student achievement.

Mission Statement

The Woodford County Public Schools, in partnership with families and the community, will **provide** challenging learning opportunities for all students, **promote** student growth and achievement, and **prepare** students to strive for excellence.

Parents may request the district to provide information regarding the professional qualifications of their child's classroom teachers. Please contact your school's principal if you wish to obtain these.

2020 - 2021

DAILY SCHOOL SCHEDULE

(For In-person Instruction)

All Elementary Schools – 7:40 a.m. - 2:40 p.m.

(Early Release 12:40 p.m.)

Woodford County Middle School – 8:15 a.m. - 3:15 p.m.

(Early Release 1:15 p.m.)

Woodford County High School – 8:15 a.m. - 3:15 p.m.

(Early Release 1:15 p.m.)

Safe Harbor Academy – 8:05 a.m. - 3:00 p.m.

(Early Release 1:00 p.m.)



SAFE HARBOR ACADEMY

134 Macey Avenue, Versailles

Phone: 879-4694 Fax: 873-1304

Safe Harbor Academy in partnership with young adults, families, and the community will prepare all students to strive for excellence through rigorous instruction and support to become college, career, and life ready citizens. Safe Harbor Academy serves students grades 6 through 12. Students may be recommended by the middle or high school administration for review by the District Screening Committee for placement at Safe Harbor Academy. We strive to provide an exceptional learning experience for all students.

Program Mission/Vision: The Safe Harbor Academy alternative learning environment will foster a culture of respect, dignity and achievement that will enable students to reach their highest potential:

- Improve academic achievement
- Provide a safe, inclusive, and accepting environment
- Utilize strengths to meet individual student needs
- Provide high academic and employability expectations
- Support social and emotional growth
- Promote perseverance and productivity
- Explore future education, career, technical interests
- Ensure family and community involvement

Safe Harbor Academy staff will be promoting a culture of **PAR** where we lead by example through all interactions:

6 P's: Prompt, Prepared, Polite, Produce, PMA, Participate

Attending Skills: Appropriate eye contact, appropriate body language, appropriate feedback, be in the moment, ask questions to clarify or validate

Respect and Dignity: Show respect and maintain dignity

Accomplishments:

- 8 students graduated during 2019-20 school year from SHA, 16 students graduated from night school/WAVE
- 3 students transitioning to Apprenticeship Programs
- Aquaponics and Student Garden, Student Store, and Outdoor Classroom Project Based Learning Initiatives

Safe Harbor Squad:

David Johnson, Buildings and Grounds
Officer Michael Fortney, School Resource Officer
Laverne Carter, Instructional Assistant
Samantha Switzer, Instructional Assistant
Abby Hayes, Instructional Assistant
John Muenks, Special Education Teacher

Sarah Asalon, English Teacher
Sarah Patton, Science Teacher
Stephen Powers, Math Teacher
Rhiannon Ashcraft, Guidance Counselor
Logan Culbertson, Principal



WOODFORD COUNTY ALTERNATIVE EDUCATION

WOODFORD COUNTY NIGHT SCHOOL

The Night School program supports an online Edgenuity based learning environment supported by instructors (2 - 4 nights) weekly for 30 weeks each school year. Secondary students may apply or have an optional transitional placement in the night school. Students must meet attendance and academic progress expectations in order to utilize the Night School program.

WOODFORD ACADEMY VIRTUAL EDUCATION (WAVE)

The Woodford Academy of Virtual Education program offering is an online Edgenuity based learning environment supported by night school instructors and other instructors by appointment. Secondary students may apply or have an optional transitional placement in the WAVE program. Students must meet academic progress expectations in order to utilize the WAVE program.

GIFTED AND TALENTED

Woodford County Public Schools recognize that the needs of gifted students are unique to each individual student. To help provide layers of support to students, teachers, and schools, each school has a designated Gifted Coordinator. This Gifted Coordinator, along with the school's gifted committee, works to assess the needs of each student and facilitate teacher learning within the school around meeting the needs of gifted students. WCPS also has a designated District Gifted Coordinator, Michelle Cason, who works to support each school's coordinator and students. If you have questions, suggestions, or concerns, please contact your school's Gifted Coordinator or Michelle Cason at 859-879-4670, ext. 6716, or michelle.cason@woodford.kyschools.us.

Gifted Student Service Plans (GSSPs) will be sent to parents by the end of October, allowing gifted service committees at each school time to reevaluate service options for students as they progress. These service plans will communicate areas of identification and the service options being utilized that school year to meet the individual student's needs. Gifted Progress Reports will be completed twice a year, at the end of each semester, and will be sent to parents.

Nondiscrimination Policy Statement

Students, their families, employees and potential employees of the Woodford County School System are hereby notified that this school system does not discriminate on the basis of race, color, national origin, age, religion, genetic information, marital status, sex, veteran status, disability or limitations related to pregnancy, childbirth, or related medical conditions in employment, educational programs, or activities as set forth in Title II, Title VI, Title IX, American With Disabilities Act, Section 504, and Age Discrimination Act of 1975 and provides equal access to the Boy Scouts and other designated youth groups. In addition, the District does not discriminate on the basis of sexual orientation or gender identity.

The Woodford County Public School System offers the following vocational education program for students in grades 9-12: agriculture, business and marketing, engineering and technology, family and consumer science, health science, and education. The following vocational classes are available to students in grade 11-12 through local vocational schools: carpentry, welding, digital design & game development, cinematography & video production, aeronautics and aerospace technology, fire science, homeland security, law enforcement services, automotive maintenance & repair technology, collision repair technology, diesel technology, pre-veterinary, high voltage electricity, low voltage electricity and equine studies. Adult Education classes are also offered to individuals pursuing a High School Equivalency diploma. Any person having inquiries concerning the Woodford County Public Schools' vocational education program or if needing this information in a language other than English or Spanish should contact Tracy Probst, CTE Department Chair at 180 Frankfort Street, Versailles, Kentucky 40383 or at (859) 879-4630 extension 3182.

Any person having inquiries concerning the Woodford County Public Schools' compliance with Title II, Title VI, Title IX, Section 504, American with Disabilities Act, or Age Discrimination Act 1975, is directed to contact the Director of Staff and Student Services, who has been designated by the Woodford County Board of Education to coordinate the system's efforts for compliance. Please contact the Director of Staff and Student Services with inquiries or if needing this information in a language other than English or Spanish at 330 Pisgah Pike, Versailles, Kentucky 40383-9214. Contact may be made by phone at (859) 879-4600, extension 2110.

Declaración de política de no discriminación

Se notifica a los estudiantes, sus familias, empleados y empleados potenciales del Sistema Escolar del Condado de Woodford que este sistema escolar no discrimina por raza, color, origen nacional, edad, religión, información genética, estado civil, sexo, estado de veterano, O discapacidad en el empleo, programas educativos o actividades según lo establecido en el Título II, Título VI, Título IX, Ley Americana de Discapacidades, Sección 504 y Ley de Discriminación por Edad de 1975 y proporciona acceso igual a los Boy Scouts y otros jóvenes designados Grupos. Además, el Distrito no discrimina por motivos de orientación sexual o identidad de género.

El Sistema Escolar del Condado de Woodford ofrece el siguiente programa de educación vocacional para estudiantes en los grados 9-12: agricultura, negocios y mercadotecnia, ingeniería y tecnología, familia y ciencia del consumidor, ciencia de la salud y educación. Las siguientes clases vocacionales están disponibles para estudiantes en los grados 11-12 a través de escuelas vocacionales locales: carpintería, soldadura, diseño digital y desarrollo de juegos, cinematografía y producción de video, tecnología aeronáutica y aeroespacial, ciencia de incendios, seguridad nacional, servicios de cumplimiento de la ley, mantenimiento automotriz y tecnología de reparación, tecnología de reparación de colisiones, tecnología diesel, pre-veterinaria, electricidad de alto voltaje, electricidad de bajo voltaje y estudios de equinos. Las clases de educación para adultos también se ofrecen a individuos que desean obtener un diploma de equivalencia de escuela secundaria. Cualquier persona que tenga preguntas sobre el programa de educación vocacional de las Escuelas del Condado de Woodford o si necesita esta información en un idioma que no sea el inglés o el español, debe comunicarse con Tracy Probst, Copresidente del Departamento de CTE en 180 Frankfort Street, Versailles, Kentucky 40383 o al (859) 879-4630 extensión 3182.

Cualquier persona que tenga preguntas sobre el cumplimiento de las Escuelas del Condado de Woodford con el Título II, Título VI, Título IX, Sección 504, American con Discapacidades o Ley de Discriminación por Edad 1975, se dirige a contactar al Director de Personal y Servicios Estudiantiles, quien ha sido Designado por la Junta de Educación del Condado de Woodford para coordinar los esfuerzos del sistema para el cumplimiento. Comuníquese con el Director de Personal y Servicios Estudiantiles con preguntas o si necesita esta información en un idioma que no sea inglés o español en 330 Pisgah Pike, Versailles, Kentucky 40383-9214. El contacto se puede hacer por teléfono al (859) 879-4600 extensión 2110.

Student Health Requirements Offered at the WOODFORD COUNTY HEALTH DEPARTMENT for Medicaid and non-insured students.



Kindergarten and 6th Grade Entry

- ✓ Dental Screening Exam (ages 5/6)
- ✓ Update Immunizations as Needed

*All school-required forms given at
completion of service.*

Please call the Woodford County Health
Department at 873-4541 for more information
or to schedule a same day appointment.



Jason Goh, Agent

State Farm

Providing Insurance
and Financial Services

- Life
- Auto
- Home
- Health
- Business

193 Frankfort Street
(859) 873-7777

jasongohinsurance.com

Go Back To School Knowing Your Pets Have All The Right Supplies



- Premium Dog & Cat Foods
- Small Animal Supplies
- Horse Feeds / Hay / Straw
- Barnyard Feeds and Hobby Needs

Quality Feeds

104 W. Green Street
859-873-2250

Monday - Friday 8:30 a.m. - 5:30 p.m.
Saturday 8:30 a.m. - 2:00 p.m.



2020 - 2021 District-Wide Grade Reporting Timelines

Subject to change due to school cancellations

ELEMENTARY QUARTERS

1ST QUARTER AUGUST 26 – OCTOBER 23

Progress Report: September 11

1st Nine Weeks ends: October 23

2ND QUARTER OCTOBER 26 – JANUARY 15

Progress Report: November 13

2nd Nine Weeks ends: January 15

3RD QUARTER JANUARY 18 – MARCH 19

Progress Report: February 5

3rd Nine Weeks ends: March 19

4TH QUARTER MARCH 22 – MAY 25

Progress Report: April 16

4th Nine Weeks ends: May 25

37 Instructional Days

Progress Report goes home: September 18

1st Nine Weeks Report Card goes home: October 30

45 Instructional Days

Progress Reports goes home: November 20

2nd Nine Weeks Report Card goes home: January 22

42 Instructional Days

Progress Report goes home: February 12

3rd Nine Weeks Report Card goes home: March 26

42 Instructional Days

Progress Report goes home: April 23

Final report mailed or sent home with student

MIDDLE SCHOOL QUARTERS

1ST QUARTER AUGUST 26 – OCTOBER 16

Progress Report: September 11

1st Quarter ends: October 16

2ND QUARTER OCTOBER 19 – DECEMBER 18

Progress Report: November 13

2nd Quarter ends: December 18

3RD QUARTER DECEMBER 21 – MARCH 12

Progress Report: February 5

3rd Quarter ends: March 12

4TH QUARTER MARCH 15 – MAY 25

Progress Report: April 16

4th Quarter ends: May 25

37 Instructional Days

Progress Report goes home: September 18

1st Quarter Report Card goes home: October 23

40 Instructional Days

Progress Report goes home: November 20

2nd Quarter Report Card goes home: January 8

47 Instructional Days

Progress Report goes home: February 12

3rd Quarter Report Card goes home: March 19

47 Instructional Days

Progress Report goes home: April 23

Final report mailed or sent home with student

WOODFORD COUNTY HIGH SCHOOL & SAFE HARBOR SEMESTERS (subject to change)

1ST SEMESTER AUGUST 26 – DECEMBER 18

6 Weeks Progress goes home: September 25

1st Semester ends: December 18

2ND SEMESTER DECEMBER 18 – MAY 25

6 Weeks Progress goes home: February 12

2nd Semester ends: May 25

72 Instructional Days

12 Weeks Progress goes home: November 6

1st Semester Report Card goes home: January 8

94 Instructional Days

12 Weeks Progress goes home: March 26

2nd Semester Report Card will be mailed



Blackburn & Ward Funeral Home and Staff Presents

Woodford County Public Schools 2020-2021 Instructional Calendar

| | |
|-------------------------|---|
| Aug. 20 | Faculty Flexible Professional Development Day/Staff Work Day |
| Aug. 21 | Faculty Flexible Professional Development Day/Staff Work Day |
| Aug. 24 | Opening Day for Faculty and Staff (no classes) |
| Aug. 25 | Teacher Prep Day/Staff Work Day (no classes) |
| Aug. 26 | First Day for Students |
| Sept. 7 | Labor Day (no classes) |
| Oct. 5 - Oct. 9 | Fall Break |
| Nov. 2 | Required Professional Learning Day (no classes) |
| Nov. 3 | Election Day (no classes) |
| Nov. 25 | No classes |
| Nov. 26 | Holiday: Thanksgiving Day (no classes) |
| Nov. 27 | No classes |
| Dec. 18 | Last Day for Students |
| Dec. 19 - Jan 3 | Winter Break |
| Dec. 25 | Holiday: Christmas Day |
| Jan. 1 | Holiday: New Year's Day |
| Jan. 4 | Schools Reopen... Students Return |
| Jan. 18 | Holiday: Martin Luther King Day (no classes) |
| Feb. 3 | Staff Professional Learning Afternoon/Early Release Day for Students |
| Feb. 15 | ***Presidents' Day (no classes, possible make-up day) |
| Mar. 1 | ****Required Professional Learning Day (no classes, possible make-up day) |
| Mar. 17 | Staff Professional Learning Afternoon/Early Release Day for Students |
| Mar. 29 - Apr. 2 | Spring Break |
| Apr. 14 | Staff Professional Learning Afternoon/Early Release Day for Students |
| May 25 | Last Day for Students (subject to change if necessary)/Early Release Day |
| May 26 | *Closing Day (possible make-up day) |
| May 27 | **Parent Teacher Conference Day (possible make-up day) |

Make-Up Days

| | |
|---|---------|
| *Day 1 | May 26 |
| (used for make-up day if school year extended) | |
| **Day 2 | May 27 |
| (used for make-up day if school year extended) | |
| ***Day 3 | Feb 15 |
| (used for make-up day if a third day is missed prior to Feb. 1) | |
| ****Day 4 | March 1 |
| (used for make-up day if school year extended) | |
| Day 5 | May 28 |
| Day 6 | June 1 |
| Day 7 | June 2 |
| Day 8 | June 3 |

**WOODFORD COUNTY
PUBLIC SCHOOLS**



Where Great Minds Meet

WISHING YOU
A GREAT YEAR!



The Flower Basket

120 Lexington Street, Versailles • 873-7839

Welcome Back to School Students!

CHARLES T.
MITCHELL
CERTIFIED PUBLIC ACCOUNTANTS

Frankfort

229 W. Main St. Suite 103
502-227-7395

Versailles

181 Frankfort Street
859-873-9465

www.CTMCPA.com

Bienvenido de nuevo al colegio!

*Estudiantes y profesores,
que tengas un muy buen año.*

Mi Pueblito



103 Crossfield Drive ~ 879-6814

BUFFALO TRACE

Veterinary Services

Accepting New Patients Wellness & Preventative Care

Open Monday - Friday 8 a.m. - 5 p.m. • Saturday 8:30 a.m. - 2 p.m.

Dr. Detra Bryant

Dr. Tracy Jenkins

859-879-3582

159 Frankfort St. • Versailles

www.buffalotracevet.com



HUNTERTOWN ELEMENTARY

120 Woodburn Hall Drive, Versailles

Phone: 879-4680 Fax: 873-6292

Web: huntertown.woodfordschools.org



Huntertown Elementary believes that each child is an important part of our community. We have created a positive way to support each child in being responsible for their own learning. We call that the Wildcat Way. The Wildcat Way asks students to be responsible, respectful and safe at all times. Huntertown students are encouraged to make kindness the primary rule while becoming responsible, respectful, confident, self-motivated students who are able to focus on academics in a positive environment.

At Huntertown:

We believe that students can be strong leaders in their school and community.

We believe that we are responsible for creating an environment where students can be active participants in their learning.

We believe the partnership between school and home is one of the most crucial pieces in a child's success in school.

We believe in our students.

MAIN EVENTS:

- WATCH D.O.G.S.
- Arts Day
- Two Book Fairs
- Girls on the Run 5K
- Talent Show
- Field Day
- Family Nights
- Parent Universities
- Jump Rope for Heart
- Student Performances

GREAT GROUPS:

- Academic Team
- Girls on the Run
- Boys on the Court
- Student Leadership
- Orchestra
- Archery Team
- STLP
- Robotics
- Buddy Readers
- Homework Helpers
- 4-H
- D.A.R.E.

PEOPLE TO KNOW:

Elaine Kaiser, Principal

Vacant, Guidance Counselor

Amanda Nugent, Academic Dean

Sara Murrell, Guidance Counselor

Vacant, Family Resources Coordinator

Amy Adams, Attendance and Grades

Moni Smith, Transportation and Background Checks

Tammy Yates, Enrollment and Bookkeeping

SBDM Members - Elaine Kaiser, Kim Hartley, Gretchen Smith, Amy Waters, Kathryn Gould and

Logan Culbertson

PTO President - Joy Cox

DATES TO KNOW:

SBDM meets the third Thursday of each month at 5 p.m. in the Huntertown Conference Room or virtually.



THREE COMFORT RETRIEVERS, a specialized breed of dog raised at GoldenQuest in Woodford County, participated in Sprout Day at Huntertown Elementary School last October. (File photo by Bob Vlach)

NORTHSIDE ELEMENTARY

500 Northside Drive, Midway

Phone: 879-4690 Fax: 846-4716

Web: northside.woodfordschools.org



Welcome to Northside Elementary where we strive to create...

"Lifelong Learners and Lifelong Leaders."

With this mission as our guide, we will continue to focus on developing habits that allow students to set personal and academic goals and become "leaders" in the journey toward those goals. As a staff, we believe that we can create an environment that fosters this development through our daily interactions with our students. Together we will achieve our mission of a safe, caring environment AND a high level of academic growth for all our students. Exciting things are always happening at Northside, and we encourage you to visit and get involved.

At Northside Elementary, we believe...

- We are a positive, safe environment where our children come first.
- Our staff works cooperatively to improve our school climate, meet challenges as they arise, and make changes when needed.
- We are committed to providing a well-rounded curriculum to all students, at all levels, with attention to their learning styles and specific needs while following our core standards. Students, teachers, and parents share the responsibility for the child's learning.
- Education spirals from Pre-K to 5th grade where learning is active, enriching, and applies to the world we live in.
- We believe in a cooperative learning environment where students, themselves, can teach and learn from each other.
- We have high standards of behavior by providing Positive Behavior Interventions and Supports (PBIS). Better known as the "Northside Code."

At Northside Elementary, we are *Learners and Leaders* by following the Northside Code:

- Be Safe
- Be Kind
- Be Responsible
- Be a Learner

Main Events: Meet & Greet, Halloween Happening, Thanksgiving Community Luncheon, K-PREP Awards Celebration, Family Literacy Nights, Arts Day, End in Mind Day, 100th Day, Un-Birthday Party, Field Day

Great Groups: Academic Team, Art Club, Music Club, Student Leadership Team, Student Technology Leadership Program

People to Know:

Scott Hundley – Principal
Sherry Basore – Counselor
Shelby Ison – Curriculum & Instruction Coach
Teter Montgomery – Secretary
Jessica Carmickle – Bookkeeper/Secretary
Julie Brangers - Attendance Clerk

SBDM Members: Scott Hundley, Principal; Teacher Representatives – Debbie Burdine, Teresa Heady, Tonya Steele; Parent Representatives – Kimberly Sherrard, Vanessa Buckley

Dates to Remember:

Aug. 3-4 Kindergarten Screening (Will call to set up by appointment)
Opening Meet and Greet: TBD



NORTHSIDE ELEMENTARY School's 2018-19 Teacher of the Year Kelle Sanders loves being that person who gets to help students experience that "aha" moment. Also pictured are first-grade students Wyatt Pitzer, left, and Melany Gomez. (File photo by Bob Vlach)

LA VICTORIA

440 Lexington Road • (859) 879-0760



The Longer You Stay
The Less You Pay

\$SHRINK-IT!
\$35
Per Month

~~\$45~~
Per Month

After 6
On-time
Monthly
Payments.
Maximum
\$10/mo.
Discount.

**Unlimited Talk & Text
+ 15GB Data**

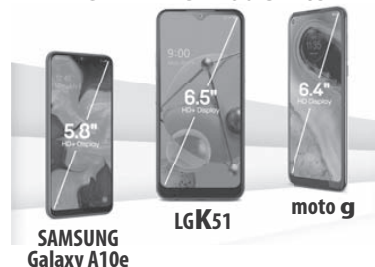
4 FREE
LG Stylo™6

When You Switch



**Think Big
Think Free**

FREE PHONE When You Switch



Restrictions apply. See store employee for details.

**Boost Customer
Exclusive**

Add A Line



LGK51
\$20 +tax
~~\$149.99~~ SRP

LG Tribute Monarch
\$10 +tax
~~\$109.99~~ SRP

**It isn't just the shirt on your back.
It's how you face the world.**

ec3 APPAREL
& PROMOTIONS

**WE HAVE
WOODFORD
FAN GEAR!**

**Plus! All WCPS employees enjoy a
10% discount on any in-stock Woodford item.
Show us your school ID at checkout!**



Photo by Bud Kraft

228 Yellow Jacket Drive, Versailles | (859) 251-4056 | www.ec3apparel.com



Central Kentucky Tutoring

- Online Tutoring
- In-Person Tutoring
- All Grade Levels
- Day or evening hours
- Certified Teachers

Check our website for a menu of all services.
centralkytutoring@gmail.org



**Cleaning out your
attic and found
a model train set?**

Give us a call for a free appraisal.

859-243-0099

209 Rosemont Garden, Lexington, KY

**OFFICE
CENTRE PLUS**

480 Lexington Rd.
Versailles, Ky. 40383
(P) 859-879-8001
(F) 859-879-8004

Monday - Friday 9 a.m. - 5:30 p.m.

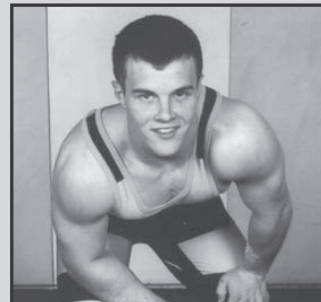
Authorized Shipping Center
UPS - FedEx - USPS



Custom Made Boxes
Packing & Shipping
Postage • Faxing
Copies • Notary
Shredding • Scan to Email
Laminating
*Ship Express, Ground
or International*
Private Mail Box Rental
Have packages shipped here for safety.

**Celebrate Michael's memory.
Support a Woodford tradition.**

THE
Michael Jackson
Wrestling Scholarship
I N C



michaeljacksonwrestlingscholarship.org

SIMMONS ELEMENTARY

830 Tyrone Pike, Versailles

Phone: 879-4670 Fax: 873-6914

Web: simmons.woodfordschools.org



The Simmons Way in 2020-2021

There are lots of great things happening behind the blue doors at Simmons Elementary, where it is "Every Kid. Every Day". This year, we will continue to follow "The Simmons Way" by being respectful, responsible, and doing our best at all times. Check out all the great ways we're making sure every kid is ready to learn every day!

Character Education and Social Emotional Learning

We believe in teaching the whole child, and helping all children be ready to learn academically, socially, and emotionally. We will continue with 20 minutes of Character Education for all students to start our day. Through these lessons, we learn how to identify our feelings, how to share our feelings productively, and how we can cope when life is tough or just doesn't go our way.

Some kids need more support, and that's why we're here! Yes, we have great programs in place for students who just need extra support in reading and math, but what if kids need extra help with life problems, stress, getting along with friends, or just feeling sad or overwhelmed? We have designed our schedule and staff so any student who needs help learning social skills, or just someone to talk about life with, has time with a trained adult to do so.

WIN (What I Need) Time

WIN (What I Need) time is designed to allow students dedicated time to receive additional resources for whatever they need. Excelling in reading? Great! You may get to work with our Media Specialist to read and discuss a great book. Math rock star? We want to challenge you to be a problem solver and a creative thinker. Having trouble with something at home? You may get to meet with one of our teachers or counselors who are trained to listen and help. Just need a little more time to finish work from today, with a little help from your teacher? Then that's what you will do during WIN time. Whatever kids need, that's what they get during this time. Every kid. Every day.

Mindfulness

Did you know that simply focusing on your breathing can help calm anger, stress, anxiety and extra energy? We know that life can be challenging for everyone sometimes, and we hope that learning some techniques for coping will help all our kids feel more relaxed and ready to learn. We are so excited for 2020-2021, and know it will be the best year yet as we follow The Simmons Way. See you soon!

Remember to follow us on Facebook @Simmons Elementary (look for the blue doors) and on Twitter @simmonsbulldogs to see some of the great learning happening and to keep up to date on all events.

People to Know

Tiffany Cook - Principal
Ryan Wilson - Administrative Dean
Sandra Dugan - Counselor
Olivia Britton - Family Resource Center
Dana McGowan - Front Office Manager
Kim Carpenter - Secretary
Officer Steve Sutton - School Resource Officer
Abigali Deloya - Attendance Clerk/Infinite Campus

SBDM Members

Principal - Tiffany Cook
Teacher Representatives - Jennifer Page, Megen Eaves, Sara Brooks
Parent Representatives - Gerald Marcum, Kristen Wilson



THIRD-GRADER Mikhol Black filled in his "Art Room Hunt Bingo" spaces on the first day at Simmons Elementary last year. Art teacher Sara Brooks is also pictured. (File photo by Bob Vlach)

Have a Great School Year!

SOUTHSIDE ELEMENTARY

1300 Troy Pike, Versailles

Phone: 879-4660 Fax: 873-4571

Web: www.woodford.kyschools.us/6/Home



At Southside, we are proud of our academic excellence and of preparing students to be well-rounded, lifelong learners.

Main Events:

- Sunrise Readers
- Student of the Month
- School spirit weeks
- Community service projects
- Celebration For Success awards
- 5th grade Pine Mountain Trip
- Grandparents Lunch
- Career Day
- Arts Day
- 100th Day Celebration
- KPrep Kickoff Celebration
- Entrepreneur Fair
- Bike-To-School Day
- Literacy Night
- STEM Night
- Grade Level Musical Performances

Great Groups:

- K'WA
- Choir
- Academic Team
- Chorus
- 4-H
- DARE
- STLP
- Ready, Set, Run
- Chinese Club
- Robotics Club



KINDERGARTNERS Hayden Barber, left, and Qua'leeah Gowdy ate lunch on the first day of school at Southside Elementary last year. An addition nearly doubled the size of the school's cafeteria and kitchen. (File photo by Bob Vlach)

People to Know:

- Jeremy Reynolds, Principal
- David Beaty, Academic Dean
- Debbie Spears, Counselor
- Bianca Bargo, Counselor
- Front Office: Shannon Brehm, Amanda Crowe, Michelle Wright, and Jennie Christopher
- SBDM Members: Jeremy Reynolds, Meagan Carroll, Dana Goh, Chavi Muniz, Cassie Prather and Dustin Flannery
- PTO President: Melissa Tomblin

THE HOMEPLACE AT MIDWAY

A GREEN HOUSE® RESIDENCE

A Christian Care Community



Assisted Living
Memory Care
Skilled Nursing



Call (859) 846-4663 to schedule a FREE tour!

The Homeplace at Midway is a Green House® residence, a model for senior living that is designed to look and feel like a real home. Over the last decade these residences have set a new standard for quality care with a model that is both proven and practical.

These cottages are built, designed and created from the ground up to foster the same feeling and experience one gets from living at home.



TheHomeplaceAtMidway.com • 101 Sexton Way • Midway, KY 40347 • 859.846.4663



Call
Robinson
Oil Co., Inc.
Frankfort, Ky.



**For your ON THE FARM
Petroleum Needs!**

TOLL FREE 1-888-575-6519

Serving Woodford County Since 1968



WOODFORD COUNTY MIDDLE SCHOOL

100 School House Road, Versailles

Phone: 879-4650 • Fax: 873-4436

Web: <http://wcms.woodfordschools.org>



WCMS MISSION STATEMENT

Supporting, Preparing, and Growing Students Toward a Successful Future.

WCMS VISION STATEMENT

To inspire generations of life-long learners who positively impact their community and world.

WCMS GUIDELINES FOR SUCCESS

At Woodford County Middle School we endorse Positive Behavioral Interventions and Supports (PBIS). Our school's big idea is that teachers should focus more time, attention and energy on acknowledging responsible behavior rather than responding to misbehavior. For that reason, our school's expectation anchors will center on the 3 Rs: **Respect, Responsible, Ready to Learn**

ATTENDANCE

School Day - 8:15 am - 3:15 pm

Arrival – Students should arrive at WCMS no earlier than 7:35 a.m.

For safety and supervision reasons, the entry doors will be locked until 7:35 a.m.

SCHOOL SUPPLIES:

Donation Items (all grades): Markers/colored pencils, paper towels, hand sanitizer, Kleenex, dry erase markers, disinfecting wipes, cap erasers, additional headphones/earbuds, pencils, tape (masking or duct)

Will Stay with Student in Backpack (all grades): 1 binder (for all core classes, preferably one that zips closed), pencil pouch, tab dividers (for each class), loose-leaf paper, pencils, glue stick, 2-pocket plastic folder, 2 composition notebooks (ELA/math), pack of multi-colored highlighters, pack of colored pencils, markers, headphones/earbuds with microphone

Virtual Academy Students (all grades): Chromebook, headphones, pencils, notebook; mouse for Chromebook (optional)

SIXTH GRADE: Will go the 2nd period teacher: 2 boxes of facial tissue, dry erase markers, paper towels;

SEVENTH GRADE: Will go to 1st period teacher: 2 boxes of facial tissue, dry erase markers, paper towels; **ELA:** 2-pocket folder; **Math:** 2-pocket folder, dry erase markers (at least 1 pack of 4 markers)

EIGHTH GRADE: Will go to 1st period teacher: 2 boxes of facial tissue, dry erase markers, paper towels

IMPORTANT DATES

Tiger Bash TBD

YEARLY EVENTS

- Tiger Bash
- Choral Musicals
- School Musicals
- Reality Store
- Tiger Fest
- Clubs
- Intramurals
- Academic Showcase
- Night with the Arts

GREAT SPORTS

Fall: Football, Girls' Basketball,

Cross Country and Cheerleading

Winter: Boys' Basketball, Wrestling, Volleyball and Archery

Spring: Baseball, Softball, Track, Boys' Soccer and Girls' Soccer

GREAT GROUPS

- Academic Team
- Dance Team
- FCA (Fellowship of Christian Athletes)
- Yearbook
- STLP (Student Technology Leadership Program)
- FFA (Future Farmers of America)
- Robotics

PARENT EMAIL

If you would like to receive emails to stay informed about WCMS news and events, please sign up through the WCMS home page. Click "E-Communication Registration" on left menu.

SBD MEMBERS

Liz Kirk, Chair; Graham Smith, Jennifer Miller, Kim Joyner, Hadassah Doss, Lauren Mitchell, Serena Ordway, Michael Stuart.



WCMS BAND STUDENTS, joined by band director Kelsey Collins, performed during a Woodford County Board of Education meeting last August. (File photo by Bob Vlach)

Dress Code Information

The school council has established standards for Woodford County Middle School students' dress that emphasize modesty, cleanliness and good grooming as defined below and by school officials as the need arises. We want to encourage each student to gain recognition through personal poise and conscientious work, not through inappropriate dress. One's personal appearance is a manifestation of self-evaluation, and we hope that students will think highly enough of themselves to dress for success.

General: All students are expected to adhere to common practices of modesty, cleanliness, and neatness and to dress in such a manner as to contribute to the academic atmosphere. Clothing, jewelry, accessories, or other items of adornment that refer to alcohol, tobacco, drugs, sexual innuendos, gang activity, violence, foul language, or weaponry is not permitted. The wearing of any item that materially or significantly disrupts the educational process or threatens the health or safety of other students or staff members is prohibited.

Pants: Students may wear jeans, khakis, slacks, or sweatpants of any color. Pants must conform to the following:

- Must be free of holes and rips above the knee (frays and tears are considered holes)
- Must cover underwear and backside at all times
- Must not sag (must be worn at waist level)
- Leggings, jeggings, tights, spandex, bicycle, yoga pants/shorts must be worn with a shirt that meets the fingertip rule (when hands are placed to the students side the length of the shirt is as long or longer than the student's fingers on all sides)

• Pajama and flannel pants are prohibited

Shorts/Skirts

- Shorts must meet the fingertip rule
- Be composed of nontransparent material
- Must be free of holes and rips
- Must cover underwear and backside at all times
- Must not sag (must be worn at waist level)
- Skirts must meet fingertip rule all the way around
- Be composed of non-transparent material to knee length

Dresses

- Dresses must meet fingertip rule all the way around
- Dresses cannot expose midriff, come off the shoulder, or show bare back. See through garments, such as dresses that are lace or crochet, must have shirts underneath that meet the 2-inch rule (see Shirts, below).
- All tops must have a 2-inch measurable sleeve in width
- Dresses with transparent material must meet dress code of shirts, pants/shorts as outlined in those sections

Shirts: All shirts must meet the following criteria:

- All tops must have a 2-inch measurable sleeve in width
- Shirts cannot expose midriff, come off the shoulder, or show bare back. See through garments, such as tops that are lace or crochet, must have shirts underneath that meet the 2-inch rule.
- Transparent tops (sheer, crochet, etc.) can be worn on top of a shirt that MEETS dress code

Footwear: Footwear must be worn at all times. Slippers, house shoes, or the like are prohibited unless prescribed by a physician.

Non-Traditional Instruction

We are pleased to announce that Woodford County Public Schools once again will be participating in "Non-Traditional Instruction" (NTI) days during the 2020-2021 school year. This approval will allow meaningful learning to take place when conditions prevent schools from being in session. An NTI day will count as an instructional day, and if approved by KDE (Kentucky Department of Education) no make-up date will be required.

WHAT IS NON-TRADITIONAL INSTRUCTION?

A non-traditional instructional day is a district declared day when learning and instruction will continue, yet students will not report to school. Learning will take place utilizing technology or conventional paper packets focusing on skills enhancement, remediation and enrichment. All materials will be provided by teacher(s) and students are expected to return completed assignments to their teacher(s) upon their return to school. Like last year, not every school cancellation day will be an NTI Day. The message from Superintendent Hawkins will clearly indicate what type of cancellation day it will be.

HOW WILL INSTRUCTIONAL MATERIALS BE PROVIDED?

Students with internet access will be able to complete work at home or another location, using educational programs that are familiar to your child. If your child does not have internet access, a paper copy of assignments will be provided in advance of an NTI day. Other information regarding assignments can be found on teacher websites, newsletters and e-communications.

WHAT WILL HAPPEN ON AN NTI DAY?

1. When the decision is made to have an NTI Day, a One Call Now message will be sent out by the superintendent notifying families.
2. Teachers will be available to answer questions and help students between 10 a.m. to 1 p.m. and 4 to 7 p.m.
3. Teachers will be available via email and will respond to both student and parent questions during the above hours. If email is not a possibility, please contact your child's school to set up a means of communication.
4. Completed work needs to be returned to school the first day back after the NTI day.

WOODFORD COUNTY HIGH SCHOOL

180 Frankfort Street, Versailles

Phone: 879-4630 Fax: 873-7731

Web: wchs.woodfordschools.org



‘Hail Woodford’ – The Gold Standard

WCHS provides all students a rigorous and comprehensive program of studies in a safe and caring environment, preparing them to pursue their life ambitions and contribute to society.

Woodford County High School is a comprehensive high school dedicated to preparing Woodford County's "Next Generation of Learners" for success. We boast a robust, rigorous, and aligned curriculum designed to meet the needs of all students. Much of the success of WCHS is attributed to our faculty, which is second to none and strives to connect with students to make their learning relevant. We are proud to have been the first high school in Kentucky to implement a 1:1 technology initiative in which all students were issued an iPad to assist them in their learning. Currently, all students receive a Chromebook. Additionally, we strive for all students to become college and/or career ready, and offer many course selections in the areas of: Health and Human Services, Business, Law and Communications, Arts and Humanities and Science, Technology, Engineering, Agriculture and Math to help provide opportunities for students to become even more competitive in the areas of college and career readiness. WCHS is proud of its commitment to the arts and athletics, enjoying successful programs in both areas. WCHS's students, faculty, and staff look forward to working together in the 2020-2021 school year to continue the quest to attain "The Gold Standard" in all that we do, whether that is virtually or in-person.

MAIN EVENTS

- Band and choral concerts
- Virtual Reading Extravaganza
- Mr. WCHS
- Graduation
- College and Career family nights
- Open Houses
- Parent/Teacher Conferences
- Homecoming and Jacket Fest
- Dance Gold
- Thanksgiving Food Drive

GREAT GROUPS

- Art Club
- Archery
- Creative Writing Club
- FBLA, Future Business Leaders of America
- FCA, Fellowship of Christian Athletes
- FCCLA, Family Career and Community Leaders of America
- FEA, Future Educators of America
- FFA, Future Farmers of America
- Film Club
- Game Club
- Homework Club and L.I.F.T for free tutoring
- HOSA, Health Occupations Students of America
- Key Club
- National Honor Society/Beta Club
- Pep Club
- Spanish Honor Society
- Student Council
- Theater Club
- The Pole
- TSA, Technology Student Association
- Woodford County Athletics
- YAC, Youth Advisory Club
- Social Action
- Stay Strong
- Young Democrats
- Young Republicans



ORCHESTRA STUDENTS at Woodford County High School performed during last year's Opening Day Celebration at the WCHS gym. (File Photo by Bob Vlach)



**Woodford
Animal Hospital**

Small Animal Medicine & Surgery

**WE CAN'T WAIT FOR YOU TO SEE
YOUR NEW PET CARE HOSPITAL!**



OPENING LATE FALL 2020



We're committed to keeping clients and staff safe during COVID-19 with NEW admittance and check-out processes.

Serving Central Kentucky Since 1961
1325 Lexington Road, Versailles • 859-873-5181

Woodford County Public Schools Amazing Accomplishments

Woodford County High School

- Named a Silver Medal School ranked 8 out of 250 high schools in Kentucky by *US New and World Report*
- A faculty and staff committed to making connections with students while providing a rigorous and relevant academic experience to each child
- Ranked by *The Washington Post* in the top 750 out of the top 2,000 high schools in America
- 11 Kentucky Governor's Scholars
- 2 Kentucky Governor's School for the Arts
- One student accepted into the Kentucky Governor's School for Entrepreneurs
- One Hugh O'Bryan recipient
- 3 National Merit Finalists
- 2 National Merit Commended Scholars
- One Commonwealth Honors Academy
- 8 students accepted into the Class of 2020 Sixth District Youth Ambassador Program
- 2 Carol Martin Gatton Academy of Mathematics & Science Scholars at Western Kentucky University
- 1 CRAFT Academy for Excellence in Science & Mathematics scholar at Morehead State University
- 21 students recognized as Youth Salute leaders
- Academic Team currently ranked 39th in the nation
- Quizbowl - A team ranked Top 5 in all tournaments
- 2019 District Champions in Governor's Bowl (13th straight)
- 2019 Region Runners Up - Quick Recall team advanced to state; 8 students qualified for KAAC State in Written Assessment
- 5 students selected for KMEA All-State Choirs
- Chorale participated in joint winter concert with Scott County and Great Crossings High Schools at Singleary Center for the Arts
- One student selected for Kentucky Governor's School for the Arts (Musical Theatre)
- Marching Band: Beechwood Festival of Bands Reserve Grand Champion; 11th place finalist at Lafayette Invitational; 9th place finalist at GRC Invitational; KMEA Class AAAA State semifinalist; Best Music, Best Effect, Best Percussion, Overall Grand Champion at West Clermont Invitational; Mid-states Band Association Class AAA finalist for the 5th consecutive year, Best Overall Percussion and our highest-ever placements; second appearance at the Bands of America Grand National Championships at Lucas Oil Stadium in Indianapolis; invited to represent Woodford County in the Governor's Inaugural Parade
- Numerous students selected for university honor bands
- Numerous students received distinguished ratings at Solo and Ensemble
- 15 students selected for one of the KMEA District 7 All-District ensembles
- 4 students selected for the KMEA All-State Band
- 2 students selected for the Honor Band of America
- Ensembles that did not get to experience their culminating event due to COVID-19, but had successful years: Winterguard (championships cancelled; Symphonic Band (District Assessment cancelled)' and Jazz Band (State Jazz Assessment cancelled)
- Boys' Cross Country - 2nd in conference
- Girls' Cross Country - 1st in conference and 2nd in region
- Girls' Soccer - District Champions
- Boys' Soccer - District Champions
- Volleyball - District Champ, Regional Runner-up
- Girls' Basketball - District Runner-up
- Boys' Basketball - District Runner-up
- Boys' Swimming - Regional Runner-up
- Girls' Swimming - 3rd in Regional
- Agriculture: 1st place Regional small engine, 2nd place Regional Ag Sales, state winner in Agricultural Institute for Cooperative contest, state winner in Equine Placement Proficiency, delegate for state FFA Nomination Committee, Regional FFA Secretary, livestock judging high individual at UK Field Day, dual credit classes offered through Murray State University, four students received state FFA Degrees, one student achieved the highest degree awarded by National FFA - American FFA Degree. Regional Speaking winners for: Nursery and Landscape Impromptu Speaking, Poultry Production Impromptu Speaking, Prepared Public Speaking, Goat and Sheep Impromptu Speaking, Floral Impromptu Speaking, Crop Impromptu Speaking

Woodford County Middle School

- Wake Up Woodford's staff earned 1st place at State STLP in the area of e-publication for their Wake Up Woodford website.
- Romie Francis earned 2nd in State STLP for her multimedia project: The T.A.C File
- Eza Gonzales earned 2nd in State STLP for her digital music: "Latina Vibes" and 2nd place in State STLP for her graphic design submission: "Bridally Yours."
- Wake Up Woodford journalists Will Endicott, Josh Jetton, and Gurnoor Singh earned honorable mention for their podcast, "The Kentucky Castle," in National Public Radio's podcast challenge.
- KYA: Our Bluegrass delegate got their bill passed into law by the KYA governor. Our Commonwealth delegates presented their bill at the Capital Annex during the conference. Conner Brumley elected KYA Speaker of the Commonwealth. Our entire WCMS delegates Awarded "delegation of excellence"

- Cheerleaders: 9th in Junior High Gameday, 14th in Large Junior High 2-1/2 minute at National Cheerleading championships in Orlando, FL. KAPOS Region 8 Winner. 2nd at KAPOS State Competition in GameDay division. Bluegrass Conference GameDay division winner and overall middle school winner.
- Chorus: 2 WCMS students were selected for KMEA Children's All State Choir and 7 WCMS students were selected for KYACDA All-State Choir
- Football: WCMS 7th grade football finished with a record of 11-3 and were conference champions and regional runner-up. Fernando Lugo, Leland Taylor and Nolan Asher were all honorable mention all-region.
- Academic Team and Math Team: WCMS academic team placed 2nd place at Conference this year. At 6th Grade Showcase, Grace Dearing placed in Written Composition and Preston Graham Placed in Language Arts.
- At District Governor's Cup, Preston Graham and Grace Taylor placed in Language Arts, James Sikorski places in Science, Wyatt Rickard placed in Arts and Humanities, Addie Patterson placed in Mathematics, and our Future Problem Solving (FPS) team got 1st place. Our FPS team advanced to the state competition, as well as Addie Patterson who advanced for Math.
- Wrestling Team: Will Seitz was a middle school state qualifier. Landon Yost placed 4th at middle school state. Charles Stout Jr. was a middle school state alternate.
- Girls Basketball: WCMS 6th grade team placed 2nd in the conference and made it to the conference tournament finals.

Elementary Schools

Huntertown

- 2018 Blue Ribbon School
- 2019 District High Attendance Flag
- Energy Star School
- Celebrating each child daily for being amazing individuals

Northside

- Two students received invitations to Student Technology Leadership Program (STLP) state-level competition - Weston Craig's Infographic "Baseball vs Football;" Emily Wilson Digital Storytelling "I Love to Dance" and Original Photo "Self-Portrait at the Barre"
- Academic Team placed second at Districts
- Academic Team received Hume Sportsmanship Award
- Kiersten Hutchison - Northside Spelling Bee winner; 3rd place in District
- Students raised over \$4,500 for children with cancer (Pennies for Patients)

Simmons

- Attendance Flag Winner - 3 times
- Academic Team - District Winner, 3rd place in Region
- Bulldogs at Bedtime allowed students to have a bedtime story read to them by teachers, staff, and some local celebrities
- Hosted Governor Beshear in March when he read to 3 different classes
- Career Day hosted over 20 different career opportunities
- Arts Day featuring over 25 artists
- K - 5 students participated in live performances in December
- Turkey Trot
- Run 4 DC to raise funds for Washington, DC trip
- Book Club with author CC Payne
- STEM night
- Glee Club performed for the community two separate times
- Snowflake Feast
- Over 500 grandparents joined us for Grandparents' Day lunch
- STLP Showcase
- K-Kids participated in serving the community at Pancake Breakfast
- Honored Veterans during Veterans Day assembly
- 4th/5th Art students created Volume 2 of the Simmons Coloring Book
- K-5 students had the opportunity to create at least 6 original pieces of art
- Virtual Variety Show where more than 15 students displayed their talents

Southside

- 2016 Distinguished School
- 2015 Kentucky School of Distinction
- 2014 Kentucky School of Distinction
- 2014 Attendance Flag Winner
- National Blue Ribbon School
- Energy Star School
- KSBA Battle of the Buildings State Winner
- 2015 District Academic Team Champions
- 2016 District Academic Team Champions
- 2016 Region Academic Team Champions
- 2019 Region Future Problem Solving Champions
- 2019 District Academic Team Champions
- 2020 Region Future Problem Solving Champions

STUDENT HEALTH REQUIREMENTS

The following are general student health guidelines. Some modifications will be made for COVID-19 related issues. Since those recommendations are ever changing, we will communicate the most current information upon re-entry to in-person school as well as changes that occur over time.

According to KRS 214.034, every student must have a valid Kentucky Immunization Certificate on file at all times.

Students enrolled in home school/private school that are also receiving supplemental services from Woodford County Public Schools, i.e. speech therapy, occupational therapy, etc. are required per Kentucky Statute to have a valid immunization certificate on file.

Checklist of Health Requirements

All Students:

✓ Effective July 1, 2018, **all students** in preschool through 12th grade must show proof of having received two doses of Hepatitis A vaccine to attend school. To meet this requirement, a **current** Certificate of Immunization Status must be provided to the school showing the date your child received these vaccine(s).

Kindergarten/Early Start Program:

✓ A valid Kentucky Immunization Certificate.
 ✓ A physical examination performed within one year prior to entering school. This must be recorded on the "Preventative Health Care Examination Form - Initial Entry."
 ✓ A vision examination must be performed by an ophthalmologist or optometrist and be recorded on the "Kentucky Eye Examination Form for School Entry."

5 and 6 Year Olds:

✓ A dental screening exam, documented on the approved Kentucky form, is required of all 5 and 6 year olds entering public school for the first time.

Sixth Grade Requirements:

✓ A valid Kentucky Immunization Certificate listing all previous doses of vaccines.
 ✓ A physical examination must be performed within one year prior to entering sixth grade and must be recorded on the "Preventative Health Care Examination Form - Sixth (6th) Grade Form."

Students Age 16 or Older:

✓ Students aged 16 years or older, must show proof of having received two doses of Meningococcal ACWY vaccine (MenACWY) to attend school. If the first dose of MenACWY was received at age sixteen (16) years or older, the second dose is not required for school entry.

Out of State/Transfer Students:

✓ A valid Kentucky Immunization Certificate listing all previous doses of vaccines.
 ✓ A physical examination must be performed and recorded on the age appropriate Kentucky Preventative Health Examination Form. This form must be turned into the school's office within thirty days after enrolling in school.

Other Suggestions:

1. As early as possible, contact your local health department or physician for an appointment, stating the need for necessary certificates.
2. Take all personal immunization records to the appointment with you.
3. Deliver all completed forms to the school's office on or before the first day of school. Enclose them in an envelope labeled with your child's name.
4. It is advisable to retain copies for your personal records.

**THESE REQUIREMENTS KEEP STUDENTS HEALTHY AND
 HELP CONTROL THE SPREAD OF DISEASE IN SCHOOLS.
 DON'T WAIT UNTIL THE LAST MINUTE!**

ATTENTION PARENTS OF 6th GRADE STUDENTS

This is a reminder that KRS 158.035 requires a valid Kentucky Immunization Certificate and Physical Examination be submitted prior to entry into 6th grade. If you have already completed this required step, you are more than welcome to submit those to Woodford County Middle School at this time. If you have not yet made your appointments, you are encouraged to do so soon to avoid any unnecessary complications such as a restriction from attending school which the above referenced law requires. If you have any questions, please contact your school nurse or call (859) 879-4608.

2020-2021 Woodford County Public Schools Transportation Information

207 Simmons Street • Telephone 879-4647

**Kay Penn, Director of Transportation • Sandra Zeefe, Driver Trainer
 Cindy Peal, Secretary • Garage Staff: Brian Wiley, Robert Woodrum**

BUS ROUTES: Bus routes will be available online at woodfordkyschools.us/transportation. Bus routes will be available a week prior to the start of our in-person instruction return date. All schools will have the bus route information as well as it being available online. You may also call the Transportation Department at 859-879-4647.

COVID-19 TRANSPORTATION GUIDELINES AND PROCEDURES

- Temperature check prior to boarding the bus by the bus monitor. Student with a temperature of 100.4 or higher will not be transported.
- Hand sanitizer prior to boarding the bus
- Mask required at all times on the bus
- Loading from the back to the front
- Bus dismissal from the front to the back
- Siblings shall sit together
- Assigned seats are mandatory for contact tracing
- No bus passes or shuttle transportation will be allowed due to the seating restrictions.
- Bus driver will take attendance before unloading students
- Bus will be cleaned and disinfected after each run

REGULATIONS FOR PUPILS RIDING SCHOOL BUSES

The right of all pupils to ride in the conveyance is conditioned on their good behavior and observance of the following rules and regulations. Any pupil who violates any of these will be reported to the school principal. Students should also refer to the Woodford County *Code of Acceptable Behavior and Discipline* for further details.

1. The driver is in full charge of the bus and the pupils. Pupils shall obey the driver cheerfully and promptly.
2. Pupils shall occupy the space designated for them by the driver.
3. Pupils carry-on items shall be held in their lap. A list of band items allowed on the bus is listed on the Transportation webpage. Sports equipment on regular routes must be able to held in the students lap.
4. When pupils enter the bus, they shall proceed promptly to their assigned seats.
5. Pupils shall be on time; the bus cannot wait for those who are not on time. Pupils need to be at the bus stop five to ten minutes before arrival of the bus.
6. Pupils shall remain seated until the bus has come to a complete stop before leaving their bus seats to get off the bus.
7. For safety reasons, pupils shall not extend their arms, legs or heads out the bus windows while the bus is in motion.
8. Pupils shall not change from one seat to another while the bus is in motion unless given permission by the bus driver to do so.
9. Use of tobacco products, vaping or drugs is prohibited.
10. Profane or indecent language is prohibited.
11. Students should not throw paper or any other rubbish on floor of bus or out the windows.
12. Pupils shall not mar or otherwise deface the bus.
13. Students may use electronic devices on the bus at the discretion of the bus driver.
14. Should any pupil persist in violating any of these regulations it shall be the duty of the driver to notify the principal, and after due warning has been given to the pupil, the principal shall then forbid such disobedient pupil the privilege of riding the bus until permission to ride again has been given by the Board of Education. Written notice of the action of the principal shall be furnished to the parent through the Board of Education, but such notice need not precede action by the principal.
15. No eating or drinking is allowed on the school bus while the bus is in motion.

PRESCHOOL

Preschool is held at the elementary schools. They will ride in on the regular route bus if they are in the morning session, and we will have a bus bring them home mid-day. If they attend the afternoon session of preschool, we will have a bus pick them up for the midday, and they will ride the regular route buses home from the school.

Monitors will also be on the regular route buses to assist the preschoolers on and off the bus. You will be notified closer to the start of preschool of the bus number and times once your student is enrolled at the preschool.

Woodford County Public Schools Directory 2020-2021

BOARD OF EDUCATION MEMBERS

| | | |
|------------------------------------|---|----------|
| Ms. Debby Edelen, Chair | 732 Eureka Drive, Versailles, KY 40383 | 879-8960 |
| Ms. Dani Bradley, Vice Chair | 621 Adena Trace, Versailles, KY 40383 | 699-6818 |
| Ms. Allison Richardson | 1300 Gastineau Lane, Versailles, KY 40383 | 621-1736 |
| Ms. Sherri Springate | 129 South Hill Road, Versailles, KY 40383 | 753-4445 |
| Mr. Ambrose Wilson IV | P.O. Box 3999, Midway, KY 40347 | 846-9617 |

SUPERINTENDENT'S OFFICE

330 Pisgah Pike, Versailles, Ky. 40383; 879-4600

| | |
|--|-------------|
| Mr. D. Scott Hawkins, Superintendent | (Ext. 2103) |
| Ms. Angel Cooper, Administrative Assistant | (Ext. 2102) |
| Ms. Elaine Bailey, Public Information/Communications Officer | (Ext. 2121) |

DEPARTMENT OF CURRICULUM AND INSTRUCTION

330 Pisgah Pike, Versailles, Ky. 40383; 879-4600

| | |
|---|-------------|
| Mr. Ryan Asher, Chief Academic Officer | (Ext. 2106) |
| Dr. Martha Collins Jones, Director of Student Achievement | (Ext. 2107) |
| Ms. Jan Sellers, MTSS Coordinator | (Ext. 2233) |
| Ms. Dana Christian, Staff Support Secretary | (Ext. 2105) |
| Ms. Sandy Adams, Secondary Teacher Leader | (Ext. 2231) |
| Ms. Meghan Bottom, Elementary Teacher Leader | (Ext. 2232) |
| Ms. Michelle Cason, Gifted and Talented Coordinator | (Ext. 6716) |

DEPARTMENT OF STAFF AND STUDENT SERVICES

330 Pisgah Pike, Versailles, Ky. 40383; 879-4600

| | |
|---|-------------------|
| Mr. Garet Wells, Director of Staff/Student Services | (Ext. 2110) |
| Ms. Jill Hargis, Social Worker/Assistant to the DPP | (Ext. 2111) |
| Ms. Sara Swinford, District Social Worker | 879-4650 |
| Ms. Kassi Bicknell, Secretary | (Ext. 2101) |
| Ms. Marti Day, Home/Hospital Teacher | 879-4600 |
| Ms. Janice Frost, Benefits Coordinator | (Ext. 2109) |
| Ms. Nicole Henriott, Substitute Coordinator | (Ext. 2112) |
| Ms. Kathy Kurtz, District Student Information Systems Coordinator | (Ext. 2123) |
| Ms. Courtney Quire, Food Service Coordinator | (Ext. 2118) |
| Ms. Janet Caudill, Assistant Food Service Coordinator | (Ext. 2118) |
| Ms. Teha Redeker, Food Service Program Assistant | (Ext. 2118) |
| Ms. Kelly Simpson, School Nurse/Health Coordinator | 879-4680/879-4670 |

FINANCIAL SERVICES

330 Pisgah Pike, Versailles, Ky. 40383; 879-4600

| | |
|--|-------------|
| Mr. Jeff Martello, Chief Operating Officer/Finance | (Ext. 2114) |
| Ms. Cheri Smith, Assistant Financial Manager | (Ext. 2115) |
| Ms. Anita Mizes, Payroll Clerk | (Ext. 2116) |
| Ms. Stephanie Smith, Accounts Payable | (Ext. 2117) |
| Ms. Gwen Lehmkuhler, Secretary/Account Clerk | (Ext. 2113) |

TRANSPORTATION DEPARTMENT

207 Simmons Street, Versailles, Ky. 40383

| | |
|--|----------|
| Ms. Kay Penn, Director of Transportation | 879-4647 |
| Vacant, Bookkeeper | 879-4647 |
| Ms. Cindy Peal, Secretary | 879-4647 |
| Vacant, Mechanic | 879-4647 |
| Mr. Brian Wiley, Mechanic | 879-4647 |
| Mr. Robert Woodrum, Mechanic | 879-4647 |
| Ms. Sandy Zeefe, Driver Trainer | 879-4647 |

SPECIAL EDUCATION DEPARTMENT/PSYCHOLOGICAL SERVICES

330 Pisgah Pike, Versailles, Ky. 40383; 879-4600

| | |
|---|-------------|
| Ms. Tracey Francis, Director of Special Education | (Ext. 2125) |
| Ms. Nancy Alspach, School Psychologist | (Ext. 2127) |
| Ms. Emily Campbell, School Psychologist | (Ext. 2126) |
| Ms. Katie Moore, School Psychologist | (Ext. 2128) |
| Ms. Donna Austin, Secretary | (Ext. 2124) |
| Ms. Dana Hash, Special Education Clerk | (Ext. 2129) |
| Ms. Jennie Hayes, Physical Therapist | 879-4600 |
| Ms. Rhonda Wade, Occupational Therapist | 879-4600 |

TECHNOLOGY DEPARTMENT

330 Pisgah Pike, Versailles, Ky. 40383; 879-4600

| | |
|--|-------------------|
| Mr. Bob Gibson, Chief Information Officer/Director of Technology | (Ext. 2120) |
| Mr. Jamie Tuttle, District Network Administrator | (Ext. 2122) |
| Ms. Liz Pitcher, Computer Training Specialist & account Clerk I. | (Ext. 2119) |
| Ms. Kara Chesser, Help Desk Technician, WCMS & WCHS | 879-4650/879-4630 |
| Mr. Jesse Martin, District Computer Technician, WCMS | 879-4650 |
| Mr. Spencer Stratton, District Computer Technician, Huntertown & Northside | 879-4680/879-4690 |
| Ms. Holly Tincher, District Computer Technician, Simmons & Southside | 879-4670/879-4660 |
| Ms. Debbie Watson, District Computer Technician, WCHS | 879-4630 |

COMMUNITY EDUCATION PROGRAMS/PRESCHOOL/ADULT EDUCATION

| | |
|--|--------------|
| Ms. Kathy Hogg, Coordinator of District Programs/Preschool Director | 879-4629 |
| Ms. Clarita Murphy, Preschool Secretary/Bookkeeper | 879-4699 |
| Ms. Ashley Sullivan, Community Ed Program Mgr./Community Liaison/Admin. Asst | 879-4628 |
| Ms. Mary Newton, GED/ABE/Adult Education Director | 859-887-9052 |
| Ms. Sunset Rivas, Migrant Recruiter & Advocate | 879-4600 |
| Ms. Carmen Wilcox, Parent Liaison/Interpreter | 879-4630 |

FAMILY RESOURCE CENTER - Woodford County Elementary Schools

| | | |
|--|----------------------------|--|
| Ms. Olivia Britton Family Resource | Simmons/Northside | 879-4677 (Simmons); 879-4697 (Northside) |
| Vacant, Family Resource | Huntertown/Southside | 879-4687 (Huntertown); 89-4668 (Southside) |
| Ms. Ashley Hicks, Family Resource Center Secretary | | 879-4677 (Simmons) |

SCHOOLS, PRINCIPALS, COUNSELORS AND SUPPORT STAFF

WOODFORD COUNTY HIGH SCHOOL (GRADES 9 - 12)

180 Frankfort St., Versailles, Ky. 40383; 879-4630

| | |
|---|-------------|
| Mr. Morgan Howell, Principal | (Ext. 3010) |
| Mr. Kevin Faris, Assistant Principal | (Ext. 3012) |
| Ms. Jennifer Forgy, Assistant Principal | (Ext. 3011) |
| Ms. Amanda Best, Building Assessment Coordinator | (Ext. 3013) |
| Ms. Cindy Patterson, Bookkeeper | (Ext. 3006) |
| Ms. Vicki Fish, Secretary | (Ext. 3002) |
| Ms. Darlene Snyder, Secretary | (Ext. 3001) |
| Ms. Jami Dale, Guidance Counselor | (Ext. 3016) |
| Ms. Regina Taylor, Guidance Counselor | (Ext. 3016) |
| Ms. Kristen Wilson, Guidance Counselor | (Ext. 3015) |
| Mr. Don Offutt, Social Worker | (Ext. 3019) |
| Ms. Sandra Simmons, Guidance Secretary | (Ext. 3015) |
| Ms. LaShannon Stratton, Student Information Systems Coordinator | (Ext. 3004) |
| Ms. Emily Bays, Student Information Systems Clerk/Attendance | (Ext. 3005) |
| Ms. Robin Waldron, Library Mida Clerk | (Ext. 3140) |

WOODFORD COUNTY MIDDLE SCHOOL (GRADES 6 - 8)

100 School House Rd., Versailles, Ky. 40383; 879-4650

| | |
|--|-------------|
| Ms. Liz Kirk, Interim Principal | (Ext. 5010) |
| Ms. Jody Powell, Interim Administrative Principal | (Ext. 5003) |
| Ms. Susan Tracy, Asst. Principal & Athletic Director | (Ext. 5011) |
| Mr., Joseph Albert, Administrative Dean | (Ext. 5012) |
| Ms. Sara Martin, Bookkeeper | (Ext. 5943) |
| Ms. Kristy Chavous, Secretary | (Ext. 5002) |
| Ms. Kristina Brookshirre, Secretary | (Ext. 5002) |
| Ms. Derby Akers, Guidance Counselor | (Ext. 5205) |
| Ms. Kelly Sayre, Guidance Counselor | (Ext. 5203) |
| Ms. Amanda Wilder, Guidance Secretary | (Ext. 5201) |
| Ms. Karen Marsee, Student Information Systems Clerk/Attendance | (Ext. 5005) |

SAFE HARBOR ACADEMY (GRADES 6-12)

134 Macey Ave., Versailles, Ky. 40383; 879-4694

| | |
|--|----------|
| Mr. Logan Culbertson, Principal | 879-4694 |
| Ms. Rhiannon Ashcraft, Social Worker | 879-4694 |

HUNTERTOWN ELEMENTARY SCHOOL (PRESCHOOL-GRADE 5)

120 Woodburn Hall Dr., Versailles, Ky. 40383; 879-4680

| | |
|--|---|
| Ms. Elaine Kaiser, Principal | Ms. Shelby Nugent, Administrative Dean |
| Ms. Sara Murrell, Guidance Counselor | Ms. Tammy Yates, Bookkeeper/Secretary |
| Ms. Moni Smith, Secretary | Ms. Amy Adams, Student Information Systems Clerk/Attendance |

NORTHSIDE ELEMENTARY SCHOOL (PRESCHOOL - GRADE 5)

500 Northside Dr., Midway, Ky. 40347; 879-4690

| | |
|---|--|
| Mr. Scott Hundley, Principal | Ms. Ryan Wilson, Curriculum Coach |
| Ms. Sherry Basore, Guidance Counselor | Ms. Eudora "Teter" Montgomery, Secretary |
| Ms. Jessica Carmickle, Bookkeeper | Ms. Julie Brangers, Student Information Systems Clerk/Attendance |

SIMMONS ELEMENTARY SCHOOL (PRESCHOOL - GRADE 5)

830 Tyrone Pike, Versailles, Ky. 40383; 879-4670

| | |
|--|--|
| Ms. Tiffany Cook, Principal | Mr. Ryan Wilson, Administrative Dean |
| Ms. Debbie Baker, Curriculum Coach | Ms. Sandy Dugan, Guidance Counselor |
| Ms. Dana McGowan, Bookkeeper/Secretary | Ms. Kim Carpenter, Secretary |
| | Ms. Abigali Contretas Deloya, Student Information Systems Clerk/Attendance |

SOUTHSIDE ELEMENTARY SCHOOL (PRESCHOOL - GRADE 5)

1300 Troy Pike, Versailles, Ky. 40383; 879-4660

| | |
|--|---|
| Mr. Jeremy Reynolds, Principal | Mr. David Beaty, Academic Dean |
| Ms. Bianca Bargo, Guidance Counselor | Ms. Debbie Spears, Guidance Counselor |
| Ms. Amanda Crowe, Bookkeeper/Secretary | Ms. Shannon Brehm, Secretary |
| | Ms. Michelle Wright, Student Information Systems Clerk/Attendance |



Woodford County High School 2020 Varsity Football Schedule

| | | | |
|--------------|------------------|--|-----------|
| September 11 | Great Crossing | at Community Stadium, Versailles | 7:30 P.M. |
| September 18 | Franklin County | at Franklin High School, Frankfort | 7:30 P.M. |
| September 25 | Frankfort | at Frankfort High School, Frankfort | 7:30 P.M. |
| October 2 | West Jessamine | at West Jessamine High School, Nicholasville | 7:30 P.M. |
| October 9 | Madison Southern | at Community Stadium, Versailles | 7:30 P.M. |
| October 16 | Collins | at Collins High School, Shelbyville | 7:30 P.M. |
| October 23 | East Jessamine | at Community Stadium, Versailles | 7:30 P.M. |
| October 30 | North Oldham | at North Oldham High School, Goshen | 7:30 P.M. |

GOVERNMENT DIRECTORY

VERSAILLES

CITY OF VERSAILLES

Brian Traugott, Mayor
196 S. Main St.
Versailles, KY 40383
859-873-5436

www.versaillesky.com

City Council: Mary Bradley, Mike Coleman,
Laura Dake, Gary Jones, Ken Kerkhoff, Fred Siegelman

PROPERTY VALUATION ADMINISTRATOR (PVA)

Judy E. Bobbitt
103 S. Main St., Courthouse Room 108
Versailles, KY 40383
859-873-4101
ibobbitt@woodfordcountyky.org
www.woodfordpva.com

WOODFORD CO. CIRCUIT COURT CLERK

Christie Edwards
130 Court St.
Versailles, KY 40383
859-873-3711
christieedwards@kycourts.net
www.courts.ky.gov

COOPERATIVE EXTENSION SERVICE

Woodford County COOPERATIVE EXTENSION
184 Beasley Drive
Versailles, KY 40383
859-873-4601



Elizabeth Coots – Agent for Family & Consumer Sciences
Ryan Farley – Agent for 4-H Youth Development
Adam Probst – Agent for Agriculture & Natural Resources
Faye Kuosman – Agent for Horticulture

Email: woodford.ext@uky.edu
www.woodford.ca.uky.edu

WOODFORD COUNTY CLERK

Sandra V. Jones
103 S. Main St., Courthouse Room 120
Versailles, KY 40383
859-873-3421
Sandra.jones@ky.gov

WOODFORD CO. CONSERVATION DISTRICT

Agriculture Resource Building
180 Beasley Road
Versailles, KY 40383
859-873-4941
www.woodfordcd.org
www.facebook.com/WoodfordConservation



WOODFORD CO. JUDGE/EXECUTIVE

James Kay
103 S. Main St., Courthouse
Versailles, KY 40383
859-873-4139
judgekay@woodfordcountyky.gov
www.woodfordcounty.ky.gov

VERSAILLES-WOODFORD CO. PARKS AND RECREATION DEPARTMENT

Falling Springs Center
275 Beasley Drive
859-873-5948
www.vwcparksrec.com

MIDWAY

CITY OF MIDWAY

Grayson Vandegrift, Mayor
101 East Main St.
Midway, KY 40347
859-846-4413
www.meetmeinmidway.com
Council Members:
Kaye Nita Gallagher, Sara Hicks, John Holloway,
Logan Nance, Bruce Southworth, Stacy Thurman

Volunteers

DEFINITION

Volunteers are persons who do not receive compensation for assisting in school or District programs. Teacher education students or students enrolled in an educational institution who participate in observations and educational activities under direct supervision of a local school teacher or administrator in a public school shall not be considered volunteers.

SUPERVISION

All volunteers shall provide assistance only under the direction and supervision of a member of the professional administrative and teaching staff.

RECORDS CHECK

A state criminal records check shall be conducted on all volunteers who have contact with students on a regularly scheduled and/or continuing basis, or who have supervisory responsibility for children at a school site or on school-sponsored trips.

Pursuant to KRS 160.380, the Superintendent/designee also may require volunteers to submit to a state and national criminal fingerprint history background check and to provide a clean CAN check. With prior approval of the Superintendent/designee, the background checks will be conducted at District expense. Otherwise, except as previously agreed upon, the volunteer must pay for the background checks.

No volunteer shall be utilized to supervise students, or deemed to have the authority to supervise students, unless the volunteer has been designated to supervise students by the Principal and approved by the Superintendent/designee, and the volunteer has undergone the required records check.

If you would like to be a part of the volunteer program, please take your driver's license and social security card to any school or to the Woodford County Board of Education office (330 Pisgah Pike). Background checks are good for five (5) years. In each school year following the initial background check, the Volunteer Letter of Intent will need to be completed prior to September 15 in order to keep your status as an approved volunteer current. If you have any questions about volunteering, please feel free to call the Woodford County Board of Education office.

Due to COVID-19, volunteers being permitted in our buildings for the 2020-2021 school year will be significantly limited.

School Social Workers and Counseling Contacts

The realities of the COVID-19 have set in. There are many challenges due to disrupted routines and a shift to on-line learning. During this time, some of you may feel isolated from co-workers, friends and family. With our daily routines being disrupted this can cause added anxiety, stress and strain-physically, mentally and financially. We encourage you to take care of your mental health and well-being. Please keep in mind that social distancing does not mean social isolation. There are many resources available to take care of your mental health and well-being. To that end, we wanted to make sure you know we are available to offer support and potentially resources to our families during this time. We are available to discuss with you issues you may be facing or, if you prefer, we can direct you somewhere else. Please email or call us at any time and we will provide support. Feel free to contact a member of our mental health team.

Jill Hargis, District Social Worker – 859-879-4600, ext. 2111
 Sara Swinford, District Social Worker – 859-879-4650, ext. 5207
 Kelly Sayre, WCMS School Counselor – 859-879-4650, ext. 5203
 Derby Akers, WCMS School Counselor – 859-879-4650, ext. 5205
 Jami Dale, WCHS School Counselor – 859-879-4630, ext. 3016
 Regina Taylor, WCHS School Counselor – 859-879-4630, ext. 3017
 Kristen Wilson, WCHS School Counselor – 859-879-4630, ext. 3018
 Don Offutt, WCHS School Social Worker – 859-879-4630, ext. 3019
 Sandy Dugan, Simmons School Counselor – 859-879-4670, ext. 6715
 Sherry Basore, Northside School Counselor – 859-879-4690, ext. 6915
 Bianca Bargo, Southside School Counselor – 859- 879-4660, ext. 6015
 Debbie Spears, Southside School Counselor – 859-879-4660, ext. 6240
 Sara Murrell, Huntertown School Counselor – 859 879-4680, ext. 6815
 Rhiannon Ashcraft, Safe Harbor Academy School Counselor – 859-879-4694, ext. 4027

By email: First name.last name@woodford.kyschools.us

Woodford Educational Endowment Foundation (WEEF)

Supporting Access to the Arts and Educational Opportunities for Woodford County Public School Students

The Woodford Educational Endowment Foundation (WEEF) is dedicated to providing all Woodford County public school students high-caliber events to expand knowledge and a deeper appreciation for areas in the performing arts. Due to COVID-19, Live performances for our students will begin in March 2021. We look forward to having our wonderful local fine arts programs perform for all Woodford County Public School students. In the meantime, WEEF will be funding our Mini-Grant program. The Mini-Grant program exists to support unfunded needs in our Woodford County classrooms K-12. Grant applications are accepted for up to \$500 per classroom and are awarded to where the greatest good can be created with the grants. In one calendar year, our Mini-Grants have funded science kits for the high school, large maps for the middle school, and books, software and teaching guides for all elementary schools.

Founded in 1994 by a group of dedicated parents, WEEF's mission is to ensure that innovative, high-quality education is delivered to public school students throughout Woodford County Public Schools. With the support of its sponsors, WEEF has given over \$200,000 to Woodford County Public Schools through Mini-Grants and sponsored fine arts performances.

Funding for WEEF projects comes from the generous sponsors of the annual WEEF Golf Tournament hosted by Citizens Commerce National Bank and from private donations. Should you wish to make a tax-deductible donation, please make your check payable to WEEF and send it to WEEF, P.O. Box 1120, Versailles, Ky. 40383. To learn more about WEEF or to volunteer, please contact Veronica Parker at talfe@aol.com.



“Wherever you are, hang in there and stay safe. And remember, this is only temporary, we’re proud of you for doing the right things!”

from The City of Midway



STUDENT CHECKING

GET A FREE TEE SHIRT WHEN YOU OPEN AN ACCOUNT

534 Marsailles Dr., Versailles, KY 40383 | 231 South Main St., Versailles, KY 40383
 (859) 879-9455 | citizenscommerce.com



* Some restrictions apply. While supplies last.

VERSAILLES PRESBYTERIAN PRESCHOOL/PRE-K PROGRAM

Versailles Presbyterian Preschool Pre-K classes are excited about another exciting year. The preschool program is conveniently located in downtown Versailles at the Versailles Presbyterian Church. The Preschool class and the Pre-K classes offer a warm Christian (nondenominational) atmosphere for meeting your child's social and emotional developmental needs.

Versailles Presbyterian Preschool also offers the following:

- Small class size and low teacher/child ratio
- Teacher and teachers' assistants have approved early childhood development training
- Parent-teacher conferences (scheduled fall and spring and as needed)
- Age appropriate hands-on learning experiences for active learning experiences
- Literacy activities and phonic awareness activities
- Special holiday programs with parent involvement in program activities
- Two monthly visits to the Woodford County Library
- A State Certified facility which requires all personnel to complete first aid and CPR training

Preschool Class (3- and 4-year-olds): The Preschool class focuses on the development of a young child's (3- and 4-year-olds) socialization and pre-academic skills. Playtime (both guided and unguided) provides the children with an opportunity to interact with other children of the same age. The preschool's curriculum is based on increasing the child's learning in the cognitive, physical, social, and emotional areas of development. The program offers many learning activities in art, language arts, music, science, pre-math skills, nutrition, dramatic play, large and small muscle skills, and sensory motor experiences.

The Preschool class meets on Tuesdays and Thursdays from 8:30-11:30 a.m.

Tuition for the Preschool class is \$160 per month, with a \$60 per semester supply fee.

Pre-K class (4-1/2- and 5-year-olds) The Pre-K class is a great preparation for school readiness (Kindergarten). The teachers will work with the children to meet their developmental and social needs. The children will increase their mastery of letters, numbers, and days of the week, seasons, and months through hands-on active learning activities. The teachers will encourage Pre-Literacy activities and Phonic Awareness to build a strong foundation for reading and writing.

The Pre-K class meets on Mondays, Wednesdays and Fridays from 8:30 a.m.-12 p.m.

Tuition for the Pre-K class is \$190 per month, with a \$75 per semester supply fee.

There is a one-time registration fee for all students of \$125.

Limited scholarships are available.

For more information and to arrange a tour of the preschool, e-mail Kristy Hamlin at khamlinvp@gmail.com or call at 859-753-8333.



ST. LEO SCHOOL

Love, Learn, Serve

As we look ahead to the 2020-21 school year, we have considered how to best serve our families and teachers in the next school year. At present, we plan to start the new school year as originally planned on **Wednesday, August 12, 2020 with in-person instruction**. Despite the ongoing uncertainty, we are optimistically preparing for the 2020-21 school year and are eager to see our families, children, and teachers back at school. We are confident that we are destined for another great year. Our children's gifts and talents combined with the dedication of our school staff and supportive parents and parish community allows us to continue to strive for excellence at St. Leo.

We are pleased to welcome our new principal Mr. Leo Labrillazo.

St. Leo School has a top-quality, dedicated and professional teaching staff.

Our high expectations for every student require both student and teacher to reach beyond their own limit to achieve more by providing:

- A teaching staff who continually engages in growth through ongoing academic course work, staff development, and professional learning communities.
- Small class size and individualized instruction
- 90% of the faculty have earned at least a Master's Degree
- After school homework clubs and tutoring

St. Leo School continually strives to create an environment designed to further each student's ability to achieve their full academic potential.

Our superior state-of-the-art facility includes:

- A 2300 sq. ft. Media Center, 1900 sq. ft. Science Lab, and high school sized athletic facility
- iPads in all elementary classrooms and interactive white boards in all classrooms
- 80 mobile computer stations

Our students demonstrate their commitment to academic excellence.

- Students' average MAP test scores are higher than students in surrounding counties
- Students consistently earn high award status in the Regional and National Science Fair, Battle of the Books, Lego© Robotics, Diocesan Spelling Bee, and National Writing and Art contests
- Excelling in advanced classes in math and foreign language

Our students have compassion for others and the courage to act on their beliefs.

- Engaged in service activities connected to our theme in our school, in the Versailles community, and in world-wide service opportunities.
- Planning and participating in daily prayer and weekly Mass

We can confidently say St. Leo School provides a superior education!

Call us to discuss enrollment.

255 Huntertown Road • Versailles • 873-4591

VERSAILLES MONTESSORI SCHOOL

To All Parents,
Overwhelmed? Exhausted? Concerned?
Slightly or overly eager to get kids off to school?

This has certainly been an unconventional year thus far, and has the makings to finish out that way. Versailles Montessori School (VMS) is shoulder to shoulder with every educator in trying to find the balance between keeping our children and families safe in dealing with the pandemic and allowing some element of "normal" learning and interaction with one another. As a small private school with both childcare (starting at 15 months old) and elementary (up to 6th grade) guidelines to consider, this school year has the opportunity to strengthen our character, heighten our critical thinking and enhance our emotional capacity to care for one another.

While making logistical and some structural modifications to prioritize disinfecting and spacing regulations, at the heart of VMS is still the individual child's needs and interests in our planning process. As a fundamental of Montessori pedagogy, each child's potential will remain the focus of our teachers and administrators. Our educators are trained and prepared to guide and support the children in their social, emotional, physical and academic development.

VMS staff are equipped to carry out our mission statement, To create peace through education...one child at a time. Never before has this endeavor been challenged as much, but the training and many years of experience with teaching and encouraging conflict resolution, empathy, compassion, self-awareness, responsibility, self-discipline, a positive attitude toward learning and persistence, VMS staff is armed and ready with the tools and capacity to guide our children through this dynamic time in history.

We look forward to seeing our families and students, even from a distance! The VMS staff send peaceful wishes to all families in Woodford County, since we're all dealing

with this crisis together. We are glad to be doing our part to support our families, and hope for a safe, healthy and positive school year for everyone.

Peacefully,

All Staff at Versailles Montessori School, (859) 873-1998



WOODFORD CHRISTIAN SCHOOL

Woodford Christian School began in-person school on Aug. 13. Woodford Christian School is an independent kindergarten through fifth grade Christian school that emphasizes a Christ-centered curriculum in all subjects. We have availability in our half-day and full-day kindergarten classes. Admissions and tuition information can be obtained on our website at www.woodfordchristian.org, or you may call the school at 873-0288. You may contact principal Cara Meadows at cmeadows@woodfordchristian.org. At Woodford Christian School, our students are Achieving, Growing and Serving. It is our desire to see students achieve academically, grow spiritually and serve others lovingly. Woodford Christian School students have consistently excelled academically. Once transitioning from Woodford Christian to other schools, students enter at a high-academic placement and continue to excel. As importantly, our students continue to grow as Christ-followers and shine God's love in all they do. To emphasize spiritual growth, our curriculum includes daily Bible lessons, and we have a weekly chapel time which involves the students in age-appropriate worship and discipleship. We also offer special classes - Spanish, physical education and art.

Due to the current COVID-19 pandemic, we are focusing on distancing in our classrooms as well as healthy hygiene habits, frequent cleaning and daily sanitation.

Woodford Christian School is located in Journey Church.



THE ACADEMY

A ministry of Versailles United Methodist Church
230 Paynes Mill Road • (859) 879-1743

2020 • The Academy Welcomes You!

The Academy is a full-time preschool program with dedicated, established teachers. We provide a loving Christian environment for children to learn, play, explore and develop. Below are just a few highlights about our school.

- Full-time programs for 3 year olds and 4-5 year olds
- Small classes
- Teachers with state approved training, first aid and CPR
- Literacy and Phonic Activities, daily Bible stories
- Letter and Number Recognition, age appropriate learning, fine and gross motor skills, cognitive skills
- Weekly thematic units, holiday parties, visits from firefighters, police, etc.

Call The Academy for more information: (859) 879-1743

The Academy does not discriminate on the basis of race, color, national origin, age, sex or disability in accordance with Federal law.

JOURNEY PRESCHOOL

Woodford Christian Preschool is now Journey Preschool. Though we have changed our name, we still offer the same quality Christian-based educational experience we have offered to families for over 20 years. Journey Christian has classes for children ages three, four, and five. The class sizes are kept at maximum of 10 three-year olds and 12 four-year olds per sessions allowing for a healthy teacher/student relationship. We have qualified educators who utilize the A Beka curriculum, while fostering a loving, safe Christian environment. Our teachers work together to meet the emotional, social, academic, and spiritual needs of our students. We nurture the creative skills in young children as they bring a spirit of wonder and great curiosity to the classroom!

Journey Preschool offers full-day and morning/afternoon options! We have classes for three- and four-year olds. Our three-year old classes with morning and afternoon options are Tuesdays and Thursdays; four-year old classes morning and afternoon options are Mondays, Wednesdays, and Fridays; and Pre-K morning/afternoon classes meet Monday through Thursday. We also have a full-day K4 class. This class is Monday through Friday. For more information or to register, please call Joni Edester at 859-873-0288.



Small Animal Medicine & Surgery

Ultrasound • Video Endoscopy • Evening Appointments
Dentistry • Orthopedic Surgery • Laser Surgery



- Dale R. Eckert, D.V.M.
- Loyde A. Jolly, D.V.M.
- Traver Dabney, D.V.M.
- Jonathan Korten, D.V.M.
- Erica Berman-Thacker, D.V.M.
- Ryan Nolty, D.V.M.
- Lauren Cuffe, D.V.M.
- Jessica Austin, D.V.M.



We're committed to keeping clients and staff safe during COVID-19 with NEW admittance and check-out processes.

Serving Central Kentucky Since 1961

1325 Lexington Road, Versailles • 859-873-5181

Snow Day Procedures

The Woodford County Board of Education has approved certain procedures for periods of inclement weather. While it is the hope of the board and the administrative staff that the schools be open every day, student safety will always be given primary consideration under the "snow day" plan. This article helps both students and parents understand the policies and practices during periods of inclement weather.

What is the superintendent authorized to do in dealing with periods of inclement weather?

1. Close all of the schools if conditions warrant such action.
2. Delay the opening of school by one hour with no pre-school (Plan B).
3. Dismiss school early under certain carefully monitored conditions.

How will parents and students be informed about the superintendent's decision during periods of bad weather?

The superintendent and his staff will evaluate weather and road conditions and will contact the news media prior to 6 a.m. only when school is going to be cancelled. Notification will be made on the school district's home page at www.woodfordschools.org. Families of current students and staff whose phone numbers are on file will be notified via the automated telephone calling system. If you wish to be removed from this list, please notify the board office at 879-4600. Area radio stations will announce the superintendent's decision as soon as possible after 6:00 a.m. Parents and students are urged to listen to the following radio and television stations for weather and school information when inclement weather conditions prevail:

Radio Stations

WJMM (FM – 99.3)
WVLK (AM – 590/FM – 93)
WGKS (FM – 96.9)
WLXG (AM – 1300)
WFKY (AM – 1490)
WKYW (FM – 104.9)
WLKT (FM – 104.5)
WMXL (FM – 94.5)
WKQQ (FM – 100.1)
WTKT (AM – 1580)
WLAP (AM – 630)
WKED (FM – 103.7/AM – 1130)
WAHY (FM – 107.9)
WBUL (FM – 98.1)
WUGR (AM – 1250)
WCGW (AM – 770)
WSTL (FM – 92.1)
WCDA (FM – 106.3)
Louisville Metro Networks

Television Stations

WLEX – TV (18)
WKYT – TV (27)
WTVQ – TV (36)
WAVE – TV (3)

Please note: Parents and students are urged *not to call* the radio or TV stations, schools, bus garage, Board of Education office or superintendent on days of inclement weather as it prevents the relay of information regarding road conditions, school closings and accidents.

What is the responsibility of the parent when any part of the snow plan is in effect?

The parent is the final judge of whether his or her child will be in attendance when there is a delayed opening or when school is held during inclement weather. Under these conditions school will be in session, and parents must use their best judgment in determining whether the child will attend school.

Parents should be keenly aware of the estimated time of pickup and delivery so that children can be assisted if necessary.

In cases of delayed opening of school, parents should make arrangements to have children cared for until buses run. Parents must also realize that if school officials deem it unsafe to open school, even after a two-hour delay, all schools will be closed. Parents must make provisions to have children taken care of in these circumstances.

How will the Woodford County Board of Education deal with a student who is absent on a day when:

1. The opening of school has been delayed?
2. Certain bus routes are not run?
3. School is in session during inclement weather?

By law, the student will be counted absent for student accounting purposes. However, the absence will be treated as an excused absence, and it will be the child's responsibility to make up any missed work.

When schools are closed, is anyone on duty at the schools?

Yes, the custodial staff is on duty.

Sign up for snow day notification by email at
www.woodfordschools.org.

Woodford Educational Endowment Foundation

The Woodford Educational Endowment Foundation (WEEF) provides Woodford County public school students access to high-quality fine arts performances free of charge. The WEEF Board would like to recognize the sponsors of the 2020 WEEF Golf Tournament.

PRESENTING SPONSOR

Citizens Commerce Bank

DIAMOND SPONSORS

Dairy Queen

PLATINUM SPONSORS

Dr. Chet Blackey, D.V.M.
Silas & Anne Dora Hart
Jack Kain Ford
Joe & Debbie Graviss Foundation
Walther, Gay & Mack, LLC

SILVER SPONSOR

Clark Distributing Company
Keystone Financial
Tremco Inc.

GOLD SPONSORS

Bluegrass Community Foundation
Bluegrass Staking
Brittany Farms
Daisy Hill Senior Living

Ear Key Hearing Clinic
Lamar Allen
Versailles Printing
Wood Chiropractic

Thank You!

To donate or to volunteer, please visit the WEEF website at
www.weefoundation.com



Contact
Cindy Shryock
for all your real
estate needs!

859-333-0753 • cshryock@rhr.com

May each student and
teacher have the **BEST**
year ever!

Good luck
WCHS Jackets
and WCMS Tigers!





**It's the KEY to safety in the
new school year!**




**your smile is
priceless**

Quillen Orthodontics
Eric L. Quillen, DDS

156 Frankfort St. • 879-5045 • www.quillenorthodontics.com

**GOOD
NEWS!**

**The Woodford Sun
continues to report all
of the local news
that you need to know!**

Subscribe by phone
873-4131 Ext. 21

Includes Access to our Website!

In County ~ \$25.00
Elsewhere in KY ~ \$30.00
Out of State: \$38.00

Community Education Program

Extending Education and Meeting Needs

The Woodford County Public Schools Community Education Program strives to create a climate of learning that improves the quality of life in Woodford County.

An advisory council comprised of volunteers representing different segments of the community helps guide the program toward meeting its mission. Every other year, the council surveys the community to determine unmet needs that can be addressed through our programming.

Local citizens who would like to teach others about a skill or area of expertise are urged to contact Community Education to explore offering classes to the community.

Community Education will be assisting the schools and working with parents on a variety of initiatives like the Reality Store program for middle school students. In partnership with Woodford County Library, Community Education offers programs for preschoolers such as "Ready-Set-Kindergarten," "Brain Builders," and "Niños Preparados." For more information about these programs and volunteer training information, please contact your child's school or Community Education.

Community Education also runs Explorer Time Company, a state licensed and STARS quality rated after school child care program, at each elementary school in the district. For more information see the ETC article in this publication or check the Community Education website listed below.

The Community Education office is located at Simmons Elementary School. For more information, please contact Ashley Sullivan at:

Phone: (859) 879-4628

E-mail: ashley.sullivan@woodford.kyschools.us

Fax: (859) 873-1328

Web page: <http://www.woodfordschools.org/Content2/ComEd-ETC>

Visit Our Office: Simmons Elementary, 830 Tyrone Pike, Versailles, KY 40383

ETC: Explorer Time Company

Award-winning after-school enrichment

ETC is an after-school childcare and enrichment program where kids have fun while learning. The program serves students, kindergarten through fifth grade, from the time school is dismissed until 6 p.m. at each of the four public elementary schools.

Each ETC site is state certified and licensed. Children have a safe, structured environment where they can enjoy planned activities, physical exercise, homework time and snacks.

Woodford County's ETC program gained statewide recognition in 2009-2010 by winning the Outstanding After-school Program Award given by the Kentucky Community Education Association. In winning the award, ETC was cited for its curriculum of enrichment that includes homework help, art, discovery centers, games, and community service. Each ETC site has also received an All-Stars quality rating from the state of Kentucky. The All-Stars program rewards childcare organizations that go above and beyond basic childcare regulatory requirements.

ETC is in the process of confirming final health and safety procedures, but it is likely we will be accepting fewer children this year to increase social distancing.

In addition to after-school sessions, ETC serves students on snow days, in-service days, fall break, part of winter break, and other days when school is closed. However, due to new social distancing guidelines, full day care may not be possible. Announcements will be made when regulations are confirmed. The program does not operate during spring break. ETC has served Woodford County students for 30 years and is operated by the school district's Community Education Program.

Children must be registered before they can attend ETC sessions. To register or receive more information, contact Ashley Sullivan or visit the Community Education Webpage at: <https://www.woodford.kyschools.us/community-education-c6525a66>.

Phone: (859) 879-4628

E-mail: ashley.sullivan@woodford.kyschools.us

Office Location: Simmons Elementary
830 Tyrone Pike, Versailles, KY 40383



Student Health Information

Medication Registration and Administration Procedures

Medications should not be administered to a student during school hours or by school personnel unless the health of the student will be adversely affected. However, if a student is required to take a medication during school hours and the parent cannot be at school to administer the medication, the parent shall register all prescription and non-prescription medication in the school office according to school procedures and shall submit a permission form signed by physician and/or parent, as outlined in the administration procedures. Trained school personnel may administer medication with proper documentation from a physician and the parent/guardian. **NO MEDICATION WILL BE PROVIDED BY SCHOOL PERSONNEL.**

While the school's medication administration procedure manual clearly defines most situations relating to medication administration, the school administrator, in collaboration with the school nurse and/or district personnel, reserve the right to evaluate any medication/medical procedure performed on school premises. Failure to follow the school's procedure for registering medications could result in disciplinary action outlined in the *Code of Acceptable Behavior and Discipline* relating to possession of controlled substances, possession of non-controlled substances, and possession of simulated controlled substances or simulated unauthorized drugs.

To ensure that all Board policies and procedures are being followed for the safety of each child, the following procedures for administering any medications will be closely followed:

1. Parents are required to deliver all medication to the school office and register it with that office. Each medication must be brought and stored in its original container. This applies to prescription and non-prescription drugs. Every medication will be stored in a locked cabinet, according to state and federal regulations. Each dose will be recorded and filed according to Board policy. The label on the container must contain the following: child's name, name of medication, physician's name, date of authorization, dosage schedule, and date of expiration. In accordance with a specified procedure in the medication administration procedures, a student may be permitted to carry emergency, time sensitive medication (e.g., inhaler, insulin, digestive enzymes, epi-pen) for a significant medical problem deemed necessary by a physician. Important: A physician's statement verifying the need for the student to carry the medication will be required and will be kept in the student's file. All other medications must remain locked away.
2. Parents must submit a permission form, completed and signed by a parent, for all non-prescription medication at the time it is delivered to the school.
3. Parents are required to submit a permission form, completed and signed by a physician and the parent, for all prescription medication at the time it is delivered to the school.
4. Parents and school personnel are required to sign a "Controlled Substances" log indicating the number of pills the school received (the pills will be counted by school personnel in the presence of the parent) each time a controlled substance is brought to the school to be administered to a child.

According to Board Policy 9.2241, students may take medication that is brought from home with signed approval from a physician and parent. Our procedures in dispensing medication follow the Kentucky Department of Education School Health Services Manual, which suggests to schools "prescription medications should be accepted on an individual basis and administered only as prescribed on the physician's authorization." Non-prescription (over-the-counter) medications may also be accepted and given on an individual basis with a completed authorization on file with a parent signature.

Woodford County Public Schools defines medication to mean "any prescription or over-the-counter medication which medical care source deems essential to be administered during school hours."

The intent of this policy is to discourage students from bringing prescription and non-prescription medications to school or administering such medications to themselves without the assistance of school officials. Neither the Woodford County Public Schools, nor any of its employees, are responsible for the improper self-administration of prescription or non-prescription medications at school.

Head Lice Management Procedures

Each school shall have a coordinator for implementation of this procedure. A trained employee will conduct screenings in each school. If a child is found to be infested with live head lice, the following steps will be taken:

1. The child will not return to the classroom if live lice are found. (Children with nits only will return to class.)
2. The parent/guardian will be called to come to the school and take the child home. The school will observe confidentiality guidelines and display sensitivity.
3. When the parent/guardian arrives, the live lice on the child's head will be shown to the parent. An information sheet will be provided to assist in treatment.
4. Upon return to school, the child will report to the office for a recheck and permission to return to the classroom. The parent/guardian will bring the child in for the recheck and wait with them until permission is granted to return to class. Teachers will not allow students to return to the classroom without the recheck and permission.
5. The coordinator or trained designee will recheck the student one (1) week from the return date. If live lice are detected at this time, the process will begin again.
6. It will be at the discretion of the coordinator at each school to agree to recheck a student's head more than once on any given day.
7. On the day of initial dismissal, the student will be granted an excused absence. Additional days missed will be counted as unexcused absences.

Services for English Language Learners (ELL)

For the 2020-2021 school year, Woodford County will have five (5) teachers and three (3) instructional assistants to provide additional instruction in English and curriculum content to our English Language Learners (ELL). In addition, the district Spanish interpreter will provide classroom support at the secondary level and family support across all schools. ELL family meetings will take place throughout the school year.

For information regarding ELL services, contact Carmen Wilcox, District Spanish Interpreter, at (859) 753-7442, or Sarah Rall, ELL Department Head, at (859) 879-4650, ext. 5622.

Servicios del programa ELL (Aprendiendo Inglés)

El año escolar 2020-2021, el Condado de Woodford contará con cinco (5) maestras y tres (3) asistentes de instrucción para proveer instrucción adicional en Inglés y contenido curricular a los estudiantes que están aprendiendo el idioma (Inglés). Por otra parte, el distrito cuenta con intérprete de español quien proveerá ayuda en las clases a nivel secundario y extenderá sus servicios con ayuda familiar a las familias en todas las escuelas. Se llevarán a cabo reuniones familiares en español durante todo el año escolar.

Para más información acerca del programa ELL (Aprendiendo el idioma inglés), contactarse con la Señora Carmen Wilcox, (interprete) llamando al (859) 753-7442, Sarah Rall (directora del programa) al (859) 879-4650, ext. 5622.

Out-of-District Student Enrollment

Students who do not live in Woodford County cannot attend Woodford County Public Schools unless they have been approved as a tuition student. **Currently, there is a moratorium on accepting any new tuition students.** Students who move out of Woodford County during the school year must enroll at a school in the district in which they reside. Students may request tuition status, which may or may not be approved. Students requesting tuition status must return a completed "Tuition Student Application" form to the Woodford County Board of Education prior to May 1. If an out-of-county employee of Woodford County Public Schools has a student who wants to attend school in Woodford County, an "Out of County Open Enrollment" application form must be completed and returned to Central Office prior to May 1, or immediately upon employment if employment occurs after that date.

Students within Woodford County must attend school in the attendance area in which they live unless approved for open enrollment at Northside Elementary during the open enrollment window. If a student moves within Woodford County during the school year, the student may complete the year in the school where they started the year provided they notify the principal of the change in address, maintain regular attendance, make satisfactory progress in all subjects enrolled, and refrain from causing any disciplinary problems. The parents will also be responsible for transportation to and from school if attending a school outside of their designated attendance area. The student must enroll in the new school the next year.



Food Services Program

Woodford County Public Schools will be participating in the National School Lunch Program and the School Breakfast Program. As part of this program all schools will offer healthy meals every school day.

MEAL PRICES FOR THE 2020-2021 SCHOOL YEAR

| | Breakfast Prices | Lunch Prices |
|--------------------|------------------|--------------|
| Elementary | \$1.30 | \$2.65 |
| WCMS | \$1.30 | \$2.80 |
| WCHS & Safe Harbor | \$1.55 | \$3.00 |
| Reduced | \$0.30 | \$0.40 |

Qualifications for children to receive free or reduced price meals include: belonging to a household whose income is at or below the Federal Income Eligibility Guidelines, belonging to a household that receives public assistance, or if the child is homeless, migrant, runaway, foster, or participates in a federal Head Start or Early Start Pre-Kindergarten program.

Household size and income criteria are used to determine eligibility for free and reduced-price benefits if the household does not receive assistance or the children are not in the other categories mentioned above. Children can get free or reduced-price meals if the household's gross income falls at or below the limits on the Federal Income Eligibility Guideline chart.

Federal Eligibility Income Chart for School Year 2020-2021

| | FREE | | | REDUCED-PRICED | | |
|-------------------------|---------------|----------------|---------------|----------------|----------------|---------------|
| Household Size | Yearly Income | Monthly Income | Weekly Income | Yearly Income | Monthly Income | Weekly Income |
| 1 | \$16,588 | \$1,354 | \$313 | \$23,606 | \$1,968 | \$454 |
| 2 | \$22,412 | \$1,832 | \$423 | \$31,894 | \$2,658 | \$614 |
| 3 | \$28,236 | \$2,311 | \$534 | \$40,182 | \$3,349 | \$773 |
| 4 | \$34,060 | \$2,790 | \$644 | \$48,470 | \$4,040 | \$933 |
| 5 | \$39,884 | \$3,269 | \$755 | \$56,758 | \$4,730 | \$1,092 |
| 6 | \$45,708 | \$3,748 | \$865 | \$65,046 | \$5,421 | \$1,251 |
| 7 | \$51,532 | \$4,227 | \$976 | \$73,334 | \$6,112 | \$1,411 |
| 8 | \$57,356 | \$4,705 | \$1,086 | \$81,622 | \$6,802 | \$1,570 |
| Each Additional Person: | +\$5,824 | +\$479 | +\$111 | +\$8,288 | +\$691 | +\$160 |

To apply for free or reduced-price meals, households can fill out the application and return it to the school unless the household has already received notification that their children are approved for free meals this year. Application forms are being distributed to all households with a letter informing households of the availability of free and reduced-price meals for their children and what is required to complete on the application. Applications also are available in the front office of schools or online @ <https://www.woodford.kyschools.us/content/18>.

Only one application is required for all children in the household and the information provided on the application will be used for the purpose of determining eligibility and verification of data. Applications may be verified at any time during the school year by the school or other program officials. An application for free or reduced-price benefits cannot be approved unless it contains complete eligibility information as indicated on the application and instructions. In the operation of child feeding programs, no child will be discriminated against because of race, sex, color, national origin, age or disability.

Families can apply for benefits at any time. If a household member becomes unemployed or if the household size increases, the household should contact the school. Such changes may make the children of the household eligible for benefits if the household's income falls at or below the Federal Guidelines.

Contact Courtney Quire at (859) 879-4615 or courtney.quire@woodford.kyschools.us at any time to request an application.

Under the provisions of the free and reduced-price policy, Courtney Quire will review applications and determine eligibility. Parents or guardians dissatisfied with the ruling of the official may wish to discuss the decision with the determining official on an informal basis. Parents wishing to make a formal appeal for a hearing on the decision may make a request either orally or in writing to Amy Smith, CFO, COO: 330 Pisgah Pike, Versailles, Ky. 40383.

When known to Woodford County Public Schools, households will be notified of their children's eligibility for free meals if they are members of households receiving assistance from the:

- Supplemental Nutrition Assistance Program (SNAP)
- Kentucky Transitional Assistance Program (KTAP)
- Medicaid* (Household composition and income criteria must be met for free meal eligibility)

An application is not required for free meal benefits for Assistance Program participants and all of the children in the household are eligible for free meal benefits. If any children were not listed on the notice of eligibility, or if a household does not receive a notice of eligibility, the household should contact the school to have free meal benefits extended to them. Participants in the Special Supplemental

Nutrition Program for Women, Infants and Children (WIC) may be eligible for free or reduced-price meals, but they will need to turn in an application including household size and total income.

When known to Woodford County Public Schools, households will also be notified of any child's eligibility for free meals if the individual child is considered "Other Source Categorically Eligible," because the child is categorized, as defined by law as:

- Foster
- Homeless
- Migrant
- Runaway
- Enrolled in a federal Head Start, or Early Start class

If any children were not listed on the notice of eligibility, the household should contact the school about their eligibility through the list above or should submit an income application.

Households notified of their children's eligibility must contact the school if the household chooses to decline the free meal benefits.

For more information, you may call Courtney Quire at (859) 879-4615 or e-mail at courtney.quire@woodford.kyschools.us. Special Meal Accommodations

**** Does your child have any special diet needs or food allergies? If so, please contact the Food Service Manager at their school. They will give you a form to be completed so that we may meet all special dietary needs for all students...**

Charge Policy: Charges up to \$10 will be allowed. If the deficit has reached the maximum \$10 allowed, students and adults shall pay cashier for breakfast and/or lunch from their Mosaic account or in cash at the time of the meal. A nutritious snack of cheese, fruit and milk shall be served in place of the regular meal. This meal shall be free of charge and non-reimbursable to food service.

NOTE: Due to processing time, students who have submitted a Free/Reduced Lunch Application may be granted an exception to the charge policy for the student's first five (5) days of school; not to exceed \$30. To allow for processing time, students who have a change of status during the course of the school year may be granted an exception to the charge policy for five (5) days of school; not to exceed \$30.

USDA Nondiscrimination Statement

In accordance with Federal civil rights law and U.S. Department of Agriculture (USDA) civil rights regulations and policies, the USDA, its Agencies, offices, and employees, and institutions participating in or administering USDA programs are prohibited from discriminating based on race, color, national origin, sex, disability, age, or reprisal or retaliation for prior civil rights activity in any program or activity conducted or funded by USDA.

Persons with disabilities who require alternative means of communication for program information (e.g. Braille, large print, audiotape, American Sign Language, etc.), should contact the Agency (State or local) where they applied for benefits. Individuals who are deaf, hard of hearing or have speech disabilities may contact USDA through the Federal Relay Service at (800) 877-8339. Additionally, program information may be made available in languages other than English.

To file a program complaint of discrimination, complete the USDA Program Discrimination Complaint Form, (AD-3027) found online at: http://www.ascr.usda.gov/complaint_filing_cust.html, and at any USDA office, or write a letter addressed to USDA and provide in the letter all of the information requested in the form. To request a copy of the complaint form, call (866) 632-9992.

Submit your completed form or letter to USDA by:

- (1) mail: U.S. Department of Agriculture
Office of the Assistant Secretary for Civil Rights
1400 Independence Avenue, SW
Washington, D.C. 20250-9410
 - (2) fax: (202) 690-7442; or
 - (3) email: program.intake@usda.gov.
- This institution is an equal opportunity provider.

Extended School Services in Woodford County Public Schools

The Extended School Services (ESS) program is designed to assist individual students who are having difficulty in one or more content areas. It specifically targets students who have been retained or are at risk of being retained, those that are at risk of dropping out of school, and low performing students. The availability of ESS services is extended to all students meeting the specified criteria. ESS programs may take the form of extra instructional time outside of regular school hours or services may be offered during the regular school day. If you would like more information concerning this program, contact the school principal or ESS coordinator at your child's school.

Guard Against Meningitis

Parents in Woodford County should be aware of a potentially fatal bacterial infection that strikes teenagers and college students at a higher rate than other age groups.

Meningococcal disease, commonly known as meningitis, can be misdiagnosed as something less serious because early symptoms are similar to those of influenza or other common viral illnesses. Symptoms include high fever, headache, nausea and stiff neck.

The disease can come on quickly and may cause death or permanent disability (brain damage, organ failure, loss of hearing and limb amputation) within hours of the first symptoms. Although the disease is rare, it can be prevented through vaccination.

Meningococcal disease is spread by air droplets and direct contact with secretions from infected persons, through coughing without covering the mouth and kissing. Teenagers and college students can reduce the risk of contracting the disease through immunization and by not sharing personal items such as food utensils, water bottles and drinking glasses.

A safe and effective vaccine is available to protect against four of the five strains of bacteria that cause meningococcal disease. Although teens and college students are at greater risk for contracting the disease, up to 83 percent of the cases in this age group may be prevented through immunization.

Kentucky law now requires one dose of meningococcal vaccine for sixth grade entry, 11 or 12 years or older.

For more information about meningococcal disease, parents should consult their child’s physician, school nurse or local health department staff. Information also is available online from these organizations:

- American Academy of Family Physicians, www.aafp.org
- American Academy of Pediatrics, www.aap.org
- Centers for Disease Control and Prevention, www.cdc.gov
- Meningitis Foundation of America, www.musa.org
- National Association of School Nurses, www.nasn.org
- National Foundation for Infectious Diseases, www.nfid.org
- National Meningitis Association, www.nmaus.org

In addition, the Kentucky Department of Education provides links to this information and the above web addresses from its Website at www.education.ky.gov.

Keeping Your Child Home Due to Illness

Please do not send an ill child to school. Your child should stay home if he/she has any of the following symptoms:

| Student Symptoms/Diagnosis | Student May Return to School When... |
|---|---|
| Fever of 100.4 degrees or above | Temp. below 100.4 degrees for at least 24 hours <i>without the use of Tylenol or Motrin.</i> |
| Vomiting | Symptom-free for 24 hours |
| Diarrhea | Symptom-free for 24 hours |
| Contagious disease being treated with antibiotic | 24 hours after first dose of antibiotic and fever free for 24 hours or as directed by doctor |
| Deep “barking-like” cough or difficulty breathing | Symptom-free for 24 hours after first dose of antibiotic |
| Diagnosed strep throat | 24 hours after first dose of antibiotic |
| Unusually tired, fussy, or pale | Symptom-free |
| Eye drainage | Symptom-free, 24 hours after first dose of antibiotic or as directed by doctor. |
| New or sudden undiagnosed rash or rash with fever | Rash disappears, diagnosed non-contagious by doctor or 24 hours after first dose of medication with area covered. |
| Ringworm | 24 hours after beginning treatment with anti-fungal medication with affected areas covered. |
| Lice | After treatment and removal of lice. Upon return to school, must be checked by trained office staff before being cleared to stay at school. |

Exclusion Criteria for COVID-19 will be communicated to parents upon re-entry to school.

Please note some students have serious medical conditions that can become life threatening when exposed to certain conditions. **Please alert the school office** if your child has measles, Rubella, chicken pox/shingles, whooping cough, or any other condition of concern.

Integrated Pest Management

The Woodford County Public School District Board of Education has implemented a special program of Integrated Pest Management (I.P.M) in order to control pests in a way that minimizes economic, health and environmental risks via a monitoring and inspection program and the judicious use of pesticides. Those individuals applying pesticides will be properly certified in keeping with applicable legal requirements for the I.P.M. program.

You will be notified twenty-four (24) hours in advance of a planned pesticide application at your child’s school, other than when bait is used, or as soon as possible when an emergency pesticide application is necessary.

Notification of Destruction of Student Special Education Records

In accordance with the state and federal regulations implementing the Individuals with Disabilities Education Act (IDEA), this is to inform the public of our intent to destroy personally identifiable information related to special education services.

Records to be destroyed are as follows: Individual Education Programs (IEPs), Evaluation Reports, Test Protocols, Notification of Meetings, Notices of Action, Conference Summary, Review of Existing Data Summaries

All other personally identifiable information within the special education file*

The reason for destruction of the above listed items is because they are no longer needed to provide educational services as it has been seven (7) years since this individual has received special education services in the Woodford County Public Schools.

*The District may maintain a permanent record, without limitation, of a student’s name, address, phone number, his/her grades, attendance record, classes attended, grade level completed, and year completed.

The District is required to maintain records for a minimum of three (3) years from the date the child leaves the school district. However, WCPS will maintain records for seven (7) years.

Please be advised that the records may be needed by the student or parent(s) for social security benefits or other purposes.

If you wish to obtain this information for your personal records, please notify Tracey Francis, DOSE, at 859-879-4600 or Donna Austin, 859-879-4621.

Substitute Employment

The Woodford County Board of Education is accepting applications for substitute employees. If interested, please visit www.woodfordschools.org and click on “Employment.” From there you may view and apply for substitute vacancies. Please contact Mr. Garet Wells, Director of Staff and Student Services, with questions by phone at 859-879-4600 or by email at garet.wells@woodford.kyschools.us.

WELCOME BACK TO • School • GOOD LUCK

WOODFORD FEED CO. INC.

For all your Lawn,
Garden and Farm Needs!

- Fertilizer, Grass Seed,
Soil Conditioners
- Bulk: Mulch, Top Soil,
and Compost
- Bird Feed & Feeders
- Garden Tools
- Chain Saws • Trimmers

We fill
Propane Tanks!

BACK TO
SCHOOL

Carhartt Jeans,
Jackets & Hats

Redwing
Boots

SERVING WOODFORD COUNTY FOR OVER 75 YEARS!

Family Owned & Operated

498 Lexington Road • Versailles • 873-4811

Woodford County Public Schools Family Resource Centers

The Family Resource Centers support students and families in removing or minimizing non-cognitive barriers to learning. Woodford County has two family resource centers: the Woodford County Family Resource Center serves Simmons Elementary and Northside Elementary and the Huntertown/Southside Family Resource Center serves Huntertown Elementary and Southside Elementary. The centers are conveniently located inside the elementary schools to best serve our students and families. We provide a wide range of services referrals, lice prevention and intervention, clothing closet assistance, personal hygiene items, truancy intervention, holiday assistance, emergency food assistance, school supplies, and referrals to child care providers. The FRC is guardians' first line of defense when they are having trouble meeting the basic needs of their family.

In addition to making assistance referrals, the Family Resource Centers, with the help of local churches and organizations, provide a number of special events throughout the year such as WATCH DOGS, Ninos Preparados/Kindergarten Academy, Kindergarten Kick-Off, Family Nights, Relatives as Parents Support Group, weekend food backpacks (Backpack Buddies), Coats and Shoes, Back to School Supply Event, holiday assistance, after school tutoring programs, and many more. The goal of these programs is to increase parent engagement within the school and create relationships between families and community partners to foster student success.

**For more information about the Family Resource Centers,
please contact the coordinators:**

Simmons/Northside: Olivia Britton – 753-7692

Huntertown/Southside: Vacant at Press Time – 753-7694

School Resource Officers

“School Resource Officer” or “SRO” means an officer who has specialized training to work with youth at a school site and is:

1. A sworn law enforcement officer or;
2. A special law enforcement officer appointed pursuant to KRS 61.902 and
3. Employed;
 - a. Through a contract between local law enforcement agency and school district;
 - b. Through a contract as secondary employment for an officer, as defined in KRS 16.010, between the Department of Kentucky State Police and a school district, or
 - c. Directly by a local board of education

The purpose of the SRO program is to promote and foster a safe learning environment in schools, at school-sponsored events, and on school transportation; provide a law enforcement presence on school property and at school sponsored events; enhance educational programs relating to safety and positive behaviors; and provide a liaison to community and law enforcement agencies. The purpose of the program is not to enforce or administer matters of school discipline and student conduct which are the responsibility of other district or school personnel.

An SRO is vested with law enforcement jurisdiction and authority as described in KRS 61.902 to KRS 61.930 and other applicable law, including but not limited to, investigating and responding to possible criminal offenses and to health or safety threats to student or school personnel.

As authorized under the Family Educational Rights and Privacy Act (FERPA), SROs are designated as the District's “law enforcement unit” possessing the law enforcement authority and exercising safety and security functions described in state law and referenced above. Records created and maintained by an SRO for a law enforcement purpose do not constitute education records under FERPA. District staff other than law enforcement personnel are not responsible for the creation of law enforcement records and are expected to observe restrictions on access to such records. An SRO is expected to provide guidance and insight to District officials and staff on such restrictions.

Buying & Selling Real Estate is One of Your Biggest Investments ... BE SELECTIVE!



Bonnie Becht 859-312-0034 Larry Britton 859-983-8031 Phyllis Chenault 859-221-6516 Cory Cooley 859-396-0191 Jeri Hartley 859-489-6252 David Humes 859-983-7999



Gary Jones 859-321-0582 Carolyn McDonald 859-227-2893 Gail Popovitz 859-351-5699 Allison Richardson 859-621-1736 Diana Roark 859-533-4300 Cindy Shryock 859-333-0753



Brenda Sizemore 859-227-5180 Sherry Snyder 859-319-5937 Cynthia Spicer 859-338-3252 Emily Webster 859-699-4478



Leading
REAL ESTATE
COMPANIES
IN THE WORLD

www. RECTORHAYDEN.com
116 S. Main St., Versailles, KY 40383 • 859-873-1299



Enrollment Requirements 2020-2021

Enrollment

The District requires the following documents be provided in order to enroll a student:

1. Current Kentucky Immunization Certificate
2. Birth Certificate or other reliable proof of age and identity
3. Current physical (within thirty (30) days of enrollment)
Each three (3), four (4), five (5), or six (6) year old student entering kindergarten shall undergo a preventative health care examination within one (1) year prior to initial admission to school.
4. Transcript (if enrolling from out-of-state)
5. Proof of eye exam (completed by January 1 of the first year child is enrolled in school)
6. Evidence of a dental screening or examination (submitted by January 1 of the first year that a five-or six- year-old student is enrolled in the District)
7. Copy of custody order (if child is in custody of a state or other agency)
8. Educational passport complete with attachments (if child is in custody of a state agency)
9. Proof of residence
10. Copy of Guardianship or Custody Order showing that child resides with the legal guardian or custodial parent (if such an order has ever been issued)
11. Notice of Expulsion/Conviction Form

Residency

Students must attend school in the county and school district in which they reside. Upon request of school staff, parents or guardians must provide proof of residence. This proof must be provided within three (3) business days of the request. The following documents will be accepted as proof:

1. Copy of a lease agreement in the name of the custodial parent or guardian
 2. Copy of a deed in the name of a custodial parent or guardian
 3. Residential utility bill in the name of custodial parent or guardian
 4. Property tax receipt in the name of a custodial parent or guardian
- Homeless students shall be exempt from the requirement to provide proof of residence. Students who are not residents of the County may not attend the District's schools unless a tuition request has been granted in writing. Students found to be enrolled at a school different than their residential district will be withdrawn and enrolled in their home district school.

School Technology

In the past year, there have been many advances made in the utilization of technology to enhance instruction, increase communication, and streamline operations in the Woodford County Public Schools.

This year we embark on the 10th year of our Woodford Next Generation Learning Initiative. This puts an electronic device in the hands of every K through 12th grade student. The goals of this initiative are to create equitable access for all students, increase collaboration and engagement, create interactive and differentiated learning experiences, and bring the educational content into a medium that students use on a regular basis.

We will continue to utilize our parent notification calling system (One Call Now) that helps us communicate with parents and guardians concerning school closings and other school events. If you would like to have your number added or removed from the call list, please contact your child's school. Infinite Campus continues to be the student information system used by the state. This system houses all of our student data and gives parents access to various school and student information.

The Woodford County Public school system launched an improved website located at www.woodfordschools.org. Each individual school has its own site which can be accessed from the district site. We hope this will streamline communication with the community, parents and students and do so in an easy to use manner. The site is user-friendly for all devices (responsive design) so you can easily access all the information you seek.

We are now in the sixth year of our Google Apps for Education initiative utilizing Chromebooks as the main instructional device. This allows our students to seamlessly utilize Google's full set of instructional and collaborative tools. This year we are able to utilize the same Google tools in grades K through 5th as each elementary school has worked to create a one to one Chromebook ratio. Students will be able to create high quality instructional products using the devices and software.

The district has two Technology Integration Specialists, who enable us to provide more instructional focus in the classrooms at the elementary and secondary levels. Utilization of these specialists has had a profound impact on instructional delivery with an emphasis on technology integration. Our TIS positions support the Next Generation Learning Initiative by preparing our students to become responsible digital citizens through the implementation of the Digital Driver's License program and implementing the K through 5th Technology Skills Curriculum. Creating conscientious digital citizens requires everyone working together, so we appreciate your help encouraging your student(s) to always be responsible while accessing digital content.



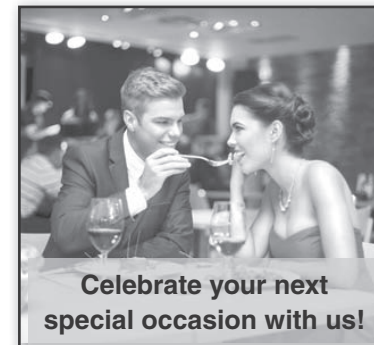
**LET'S SUPPORT
OUR COMMUNITY**
Make sure to support
your community by
visiting local restaurants.
**Call ahead for curbside!
Simple and Easy**

WELCOME BACK TO AN ALL NEW SCHOOL YEAR!

Enjoy a delicious special or
choose from our menu!



Trippin'
Roots
back
home at
Ricardo's
Tuesday
Nights
6-8



Celebrate your next
special occasion with us!

110 Frankfort Street ~ 859-873-3663

Hours: Sunday - Thursday 11 a.m. - 9 p.m. • Friday - Saturday 11 a.m. - 10 p.m.

R_x

FREE DELIVERY

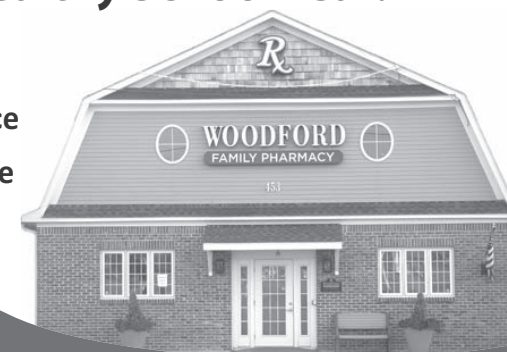
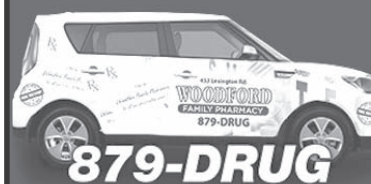
**The Prescriptions You Need.
The Attentive Service You Deserve.**

We'll be here this school year for all your
Prescription and Pharmacy Needs.

**Wishing You A Happy and
Healthy School Year!**

- ✓ Fast and easy prescriptions
- ✓ Professional pharmacy advice
- ✓ Friendly, personalized service

Plus, you'll have our
everyday low prices on the
over-the-counter remedies,
personal care products,
convenience items, and more!



Woodford Family Pharmacy
453 Lexington Road, Versailles
859.879.3784

DRIVE-THROUGH

FERPA AND CHILD FIND

In accordance with the Family Education Rights and Privacy Act, written policies and procedures have been developed which describe the Woodford County Public Schools requirements regarding the confidentiality of personally identifiable information. Stated in this notice is a summary of your rights under the Act. These rights are passed on to the student at age 18. For the purpose of this notice, a student 18 years old or older will be referred to as an eligible student. Parents, guardians, and eligible students may look at all education records relating to that student by making a request to the principal of the school where that student attends.

The Woodford County Public Schools will presume that the parent has the authority to review and inspect records relating to their children unless the district has been advised in writing that the parent does not have legal authority under applicable state law governing such matters as guardianship, separation and divorce.

Personally identifiable information is not released to another party unless there is written authorization from the parent or eligible student, or there is a Legitimate Educational Interest as defined in the *Policies and Procedures* for confidentiality. A current list of employees’ names and positions who have access to personally identifiable information is on file in each school. The Woodford County Public Schools has described in its *Policies and Procedures* the conditions under which personally identifiable information is released to another person without written parental consent.

“Directory Information” is information contained in an educational record which would not generally be considered harmful or an invasion of privacy if disclosed. This information may be released to news media, sports organizations, scholarship or college entrance committees, military personnel, or official organizations whose need for data is connected with student help activities. Directory information includes, but is not limited to, the student’s name, address, telephone listing, date and place of birth, major field of study, participation in officially recognized activities and sports, weight and height of member of athletic teams, dates of attendance, degrees and awards received, and the most recent previous educational agency or institution attended. The parent, guardian or eligible student currently enrolled, may request all or part of the directory information be withheld. The request must be in writing to the principal of your child’s school, within thirty (30) calendar days after this notification has been distributed. The written request must specifically request what information may not be used as directory information.

In accordance with federal regulation concerning the release or transfer of educational records, it is the policy of this school district to forward education records on request to a school in which a student seeks or intends to enroll. Parents may obtain upon request a copy of the records transferred.

The Woodford County Public Schools keeps educational records in a secure location in each school and Board office.

The Woodford County Public School District obtains written consent from a parent or eligible student (age 18 or who is attending a postsecondary institution), before disclosing personally identifiable information to an entity or individual not authorized to receive it under FERPA.

For students who have been determined eligible for programs for Special Education, educational records will be destroyed at the request of the parent when they are no longer needed to provide educational programs or services. The Woodford County Public Schools may destroy the educational records of a child without parent request seven (7) years after they are no longer needed to provide educational programs or services. Parents are advised that data contained in the records may later be needed for Social Security benefits or other purposes. The Woodford County Public Schools may retain, for an indefinite period of time, a record of the student’s name, address, telephone number, grades, attendance records, classes attended, grade level completed, and year completed.

Children eligible for Special Education include those children and youth with disabilities who have autism, deaf-blindness, developmental delay, emotional-behavior disability, hearing impairment, mental disability, multiple disabilities, orthopedic impairment, other health impairment, specific learning disability, speech or language impairment, traumatic brain injury, or visual impairment and who because of such an impairment need Special Education services.

Children eligible for 504 services include those children in a public elementary and secondary education program who have a current physical or mental impairment that currently substantially limits some major life activity which causes the student’s ability to access the school environment or school activities to be substantially limited.

Children eligible for the State-Funded Preschool program include three-and four-year-old children identified with disabilities and four-year-old children who are at-risk, as defined by federal poverty levels up to 150 percent. Preschool children eligible for special education must have an Individual Education Plan (IEP) instead of a 504 plan to receive State-Funded Preschool program services.

The Woodford County Public Schools has an ongoing “*Child Find*” system, which is designed to locate, identify and evaluate any child residing in a home, facility or residence within its geographical boundaries, age three (3) to twenty-one (21) years, who may have a disability and be in need of Special Education or 504 services. This includes children who are not in school; those who are in public, private or home school; those who are highly mobile such as children who are migrant or homeless; and those who are advancing from grade to grade, who may need but are not receiving Special Education or 504 services.

The district’s “*Child Find*” system includes children with disabilities, attending private or home schools within the school district boundaries, who may need special education services.

The Woodford County Public Schools will make sure any child enrolled in its district who qualifies for Special Education or 504 services, regardless of how severe the disability, is provided appropriate Special

Education or 504 services at no cost to the parents of the child.

Parents, relatives, public and private agency employees, and concerned citizens are urged to help the Woodford County Public Schools find any child who may have a disability and need Special Education or 504 services. The District needs to know the name and age, or date of birth of the child; the name, address, and phone number(s) of the parents or guardian; the possible disability; and other information to determine if Special Education or 504 services are needed.

“*Child Find*” activities will continue throughout the school year. As part of these efforts the Woodford County Public Schools will use screening information, student records, and basic assessment information it collects on all children in the district to help locate those children who have a disability and need Special Education or 504 services. Any information the District collects through “*Child Find*” is maintained confidentially.

Letters and phone calls are some of the ways Woodford County Public Schools collects the information needed. The information the school district collects will be used to contact the parents of the child and find out if the child needs to be evaluated or referred for Special Education or 504 services.

If you know of a child who lives within the boundaries of the Woodford County Public Schools, who may have a disability, and may need but is not receiving Special Education or 504 services, please call: Director of Special Education, 859-879-4600, or send the information to:

Director of Special Education
Woodford County Public Schools
330 Pisgah Pike
Versailles, KY 40383

Director of Section 504
Woodford County Public Schools
330 Pisgah Pike
Versailles, KY 40383

If you know of a child who attends a private or home school within the boundaries of the Woodford County Public Schools, who may have a disability and may need but is not receiving Special Education services, please call Director of Special Education, 859-879-4600, or send the information to:

Director of Special Education
Woodford County Public Schools
330 Pisgah Pike
Versailles, KY 40383

Written *Policies and Procedures* have been developed which describe the District’s requirements regarding the confidentiality of personally identifiable information and “*Child Find*” activities. There are copies in the Principal’s office of each school, and in the Board of Education office. Copies describing these *Policies and Procedures* may be obtained by contacting:

Director of Staff and Student Services
Woodford County Public Schools
330 Pisgah Pike
Versailles, KY 40383 • (859) 879-4600

The district office is open Monday through Friday, 8 a.m. to 4 p.m.

The Woodford County Public Schools provides a public notice in the native language or other mode of communication of the various populations in the geographical boundaries of the District to the extent feasible. If you know of someone who may need this notice translated to another language, given orally, or delivered in some other manner or mode of communication, please contact the *Director of Staff and Student Services*, the *Director of Special Education*, or the *Director of Section 504*, at the address or phone number listed above for the Woodford County Public Schools.

AVISO PUBLICO

De Acuerdo con los Derechos de Educacion Familiares y Acto del Retiro, politicas escritas y procedimientos se ha desarrollado que describe el Condado de Woodford los requisitos de Woodford Condado Publico Escuelas de Escuela Publica con respecto a la confidencialidad de informacion personalmente identificable. Declarado en este aviso es un resumen de sus derechos bajo el Acto. Estos derechos se pasan adelante al estudiante a edad dieciocho. Con el proposito de este aviso, un estudiante 18 anos o mas viejo estara llamado los Padres del estudiante elegibles, guardianes, y los estudiantes elegibles pueden parecer en absoluto la educacion graba relacionando a ese estudiante haciendo una demanda al Principal de la escuela donde ese estudiante asiste.

Para informacion extensa o si usted conoce un nino o juventud que viven en Condado de Woodford, puede tener una invalidez, y no esta recibiendo que los servicios necesitado traen, telefonan, o envian la informacion a:

Director de Educacion Especial
Woodford Condado Publico Escuelas
330 Pisgah Pike
Versailles, KY 40383 • 859-879-4600

Adult Education (GED, English as a Second Language, Career Preparation)

Woodford County Adult Education Skills U offers free classes for adults ages 18 and over who would like to earn a GED, learn English as a Second Language, or prepare to enter college or the workforce. Our caring staff provides personalized advising and instruction to help you meet your educational and career goals.

Did you know the average high school or GED grad earns an average of \$9,200 more per year than those without a diploma? Now is the time to finish your GED. We offer a variety of class times, online instruction, and financial assistance for those who need help with the cost of the exam. If you are between the ages of 18-24, you may qualify for our special Youth Program, which allows you to take the GED for free, receive a \$250 cash bonus for earning your GED, and receive paid work experience in a career that interests you.

Call our office today to set up an appointment:
Woodford County Adult Education Skills U
209 North Main Street, Suites D & E
859/879-4669 or 859/887-9052
woodfordadulthood.weebly.com

Migrant Education Program

The Migrant Education Program provides support for the children of seasonal agricultural farm workers in Woodford County Public Schools. This program connects students to tutoring and additional academic instruction as well as works with other school and community agencies to connect families to social and health services.

Who qualifies?

- Have you lived in Woodford County less than 3 years?
- Do you or have you worked in agriculture? (straw, hay, tobacco, fruit, or vegetables)
- Do you have someone younger than 22 in your home?

Who to contact?

If you believe a student may qualify for the program or if a migrant student needs assistance, please contact Sunet Rivas at sunet.rivas@woodford.kyschools.us, 859-879-4707 or 859-753-6012.

El programa de educación para familias migrantes

El programa de educación para familias migrantes es un programa de educación complementaria que ofrece apoyo a los niños de los trabajadores agrícolas y sus familias. Este programa trabaja para asegurar que los servicios académicos correspondientes se ofrecen para ayudar a los niños les va bien en la escuela. El programa trabaja con otras agencias de la comunidad para conectar familias a los servicios de salud y de la familia.

Quien Califica?

- Ustedes han vivido en el distrito de Woodford por menos de 3 años?
- Trabajan o trabajaron en agricultura? (paja, heno, tabaco, fruta, o vegetales)
- Tienen alguien menor de 22 años en casa?

Quien Contactar?

Si usted cree que un estudiante puede calificar para el programa o si un estudiante migrante necesita ayuda, por favor haz contacto con Sunet Rivas, en sunet.rivas@woodford.kyschools.us o llame al 859-879-4707 or 859-753-6012.



The Woodford Sun

Your Best Source for Local News!

In Print and Online

Only \$25 for a 1 Year Subscription!

(In Woodford County)

**To subscribe, call 859-873-4131 or
 complete the form below and mail check to:
 The Woodford Sun, P. O. Box 29, Versailles, KY. 40383.**

**For online subscriptions, visit our website at
 www.woodfordsun.com**

Name _____

Address _____

City _____ State _____ Zip _____

Phone _____

Email _____

Facts Woodford County Public School Students Need to Know

School Safety

Safety is a priority for Woodford County Public Schools. Planning is key to protecting our staff and students at all times. Our procedures involve short and long-term planning and include immediate and long-term strategies to ensure the safety of our children. Woodford County Public Schools has implemented several strategies and continues to plan long-term strategies through a crisis management plan which are reviewed and updated annually. Strategies include school resource officers (SROs) in all schools; an updated Emergency Response Plan; partnership programs with the local law enforcement; representation on the local emergency planning committee; peer mediation programs; a truancy mediation program; an advisor/advisee program; updated security equipment; school identification tags for parking; visitor screening procedures; and comprehensive student release procedures.

Code of Conduct

We strive to create an environment that is welcoming and nurturing for our students and staff and one that encourages growth and success. This requires consistent disciplinary procedures that are outlined in the board-adopted *Code of Acceptable Behavior and Discipline*. These procedures are reviewed annually with input from a committee of board members, school personnel, students, parents, and community members. The *Code of Acceptable Behavior and Discipline* will be given to every student in the school system. We ask parents to discuss the policies and procedures with their children so that both become familiar with any changes. The "Acknowledgement of Receipt" in the front of each book should be signed and returned by the parent to the child's school.

Alternative Education

Safe Harbor Academy is the off-site alternative placement serving the Woodford County Public Schools. In addition, both Woodford County Middle School and Woodford County High School have a School Within A School (SWS) alternative placement on site at their respective locations. Students are placed in alternative settings for various reasons to meet their unique academic, behavior, social and emotional needs. While agreement of a placement in an alternative setting is desired, it is not required. A student educated in an alternative setting in another district is not guaranteed placement in an alternative setting in Woodford County. After a review of records along with input from previous schools and agencies, a determination will be made and the parent/legal guardian will be notified where to enroll their child.

Solicitation of Students

No solicitation of students may take place on school grounds. This includes student sales during school hours.

Investigations

Incidents may occur that result in an investigation involving the principal, staff and students. The purpose of the investigation will be to clarify the events surrounding the incident. Because the principal/designee is acting "in loco parentis" (in place of the parent) while students are in school, the principal/designee has the right to question a student to gather information relating to an incident without the parent or any other adult being present.

Controlled Substances and Alcohol Policy

No student shall possess, use, sell, distribute, transfer or be under the influence of any unauthorized drug, controlled substance or alcohol on any school property, at any location of a school-sponsored or endorsed activity, or in route to or from school or a school-sponsored or endorsed activity. "Possession" includes an unauthorized drug, controlled substance or alcohol being located on the person or in the locker assigned to the student, in vehicles brought onto school property by the student, at the location of a school-sponsored or endorsed activity, and any other place where deposited by the student. Students in violation of this policy may be recommended for an administrative hearing as in the *Code of Acceptable Behavior and Discipline*.

Personal Telecommunication Device Policy

Students shall be permitted to possess and use telecommunication devices as permitted by their school administration while on school property or while attending school-sponsored or school-related activities, whether on or off school property. The principal has the authority to make exceptions to this policy. Requests for exceptions for any reason shall be put in writing to the building principal. **High school students should refer to the WCHS Student Handbook for additional restrictions and/or exceptions. Students enrolled at Safe Harbor will follow the consequences outlined in their Safe Harbor Student Handbook as opposed to the general outline below.**

Telecommunication device means any device that emits an audible signal, vibrates, displays a message or otherwise summons or delivers a communication to the possessor. The District shall not be responsible for loss, theft, or destruction of devices brought onto school property.

First Offense — The device will be taken by the administration and returned at dismissal. The device will also be checked into the office in the morning and returned at dismissal for the next 4 school days following the initial violation. If the cell phone or other telecommunication device is used to facilitate a violation of the Code of Conduct, then it could result in additional discipline. Failure to turn over the phone to the requesting teacher/administrator will be considered defiance and shall be dealt with accordingly.

Second Offense — The device will be taken by the administration for the remainder of the school day and returned at dismissal. The device will also be checked into the office in the morning and returned at dismissal for the next 9 school days following the initial violation. Failure to turn over the phone to the requesting teacher/administrator will be considered defiance and shall be dealt with accordingly.

Third Offense — The device will be taken for the remainder of the school day and kept at school for the 14 school days following the date of the 3rd offense. In all cases, the phone must be picked up by the parent/guardian. Failure to turn over the phone to the requesting teacher/administrator will be considered defiance and shall be dealt with accordingly. The student will also lose the right to have a telecommunication device or cell phone on school property for six months while school is in session or for the remainder of the school year, whichever is greatest.

No student shall use a telecommunication device in a manner that would violate the privacy rights of any individual while on school property or while attending a school-related activity. Examples of such a violation would be, but not be limited to, recording other Code of Conduct violations such as a student altercation, harassment, tobacco use, or any other inappropriate behavior. Failure to comply with the consequences associated with

violating the telecommunication device policy, or a telecommunications device policy infraction that necessitates holding a device for evidentiary purposes, will result in the device being kept at school instead of allowing for a check in and check out process. Use of any telecommunication device, including but not limited to smart watches, smart phones, fitness trackers and other devices, which results in the infraction of any other discipline policy, is subject to an appropriate consequence for that violation in addition to the consequence for violating the personal telecommunication device policy. Students may also be asked to remove any wearable telecommunication device (i.e. smart watches, fitness trackers, etc.) during assessments and tests. The consequences associated with a violation of this policy will be the same whether or not the phone is being used inappropriately by the owner or another individual.

Homeless Students

If your family lives in any of the following situations: 1) in a shelter, motel, vehicle, or campground; 2) on the street; 3) in an abandoned building, trailer, or other inadequate accommodations; or 4) doubled up with friends or relatives because you cannot find or afford housing, then you have certain rights or protections under the McKinney-Vento Homeless Education Assistance Act.

You have the right to: 1) go to school, no matter where you live or how long you have lived there, and be given access to the same public education provided to other students; 2) continue in the school you attended before you became homeless or the school you last attended, if that is your choice and is feasible. The school district's local liaison for homeless education must assist you, if needed, and offer you the right to appeal a decision regarding your choice of school if it goes against your wishes. You have the right to: 3) receive transportation to the school you attended before you became homeless or the school you last attended, if you request such transportation; 4) attend a school and participate in school programs with students who are not homeless (students cannot be separated from the regular school program because they are homeless); 5) enroll in school without giving a permanent address (schools cannot require proof of residency that might prevent or delay school enrollment); 6) enroll and attend classes while the school arranges for the transfer of school and immunization records or any other documents required for enrollment; 7) enroll and attend classes in the school of your choice even while the school and you seek to resolve a dispute over enrollment; 8) receive the same special programs and services, if needed, as provided to all other students served in these programs; and 9) receive transportation to school and to school programs.

When you move, you should do the following: 1) contact the school district's local liaison for homeless education (see phone number below) for help in enrolling in a new school or arranging to continue in your former school. (Or, someone at a shelter, social services office, or the school can direct you to the person you need to contact.); 2) tell your teachers anything that you think they need to know to help you in school and; 3) ask the local liaison for homeless education, the shelter provider, or a social worker for assistance with clothing and supplies, if needed.

Woodford County contact is Assistant to the Director of Pupil Personnel, Jill Hargis, at (859) 879-4600, ext. 2111; state coordinator is Homeless Program Services at (859) 564-3791; and the National Center for Homeless Education at toll-free help line number 1-800-308-2145.

Release of Students

At any time students are dismissed from school, they shall be released according to the written instructions provided by the custodial parent/guardian. The instructions, which shall be requested at the time the student registers/enrolls for the school year, shall include the student's regular mode of transportation at the end of the day and a list of persons, in addition to the custodial parent/guardian, who are authorized to pick up the child from school. Any deviation from the authorized release process must be approved by the Principal/designee prior to the student departing school in another manner.

It shall be the responsibility of the custodial parent/guardian to notify the school in writing if release instructions are to be revised. If written instructions are not provided to the school, the student shall only be released to ride home on the assigned bus or with the custodial parent/guardian.

Any student who leaves the school grounds at any time without proper authorization shall be subject to appropriate disciplinary action.

Release Process

If the student is to be picked up early, the custodial parent/guardian or designee shall report to the Principal's office and sign for the student's release.

Each school shall maintain a daily entry/exit log of students signing in late or signing out early and shall require proof of identification from individuals (visual identification by an employee, driver's license, picture identification, etc.) to assure that they are authorized to pick up the student.

Those students who are not on record as being under the care or control of a parent/guardian may sign for their own dismissal.

Exceptions

A student may be released to a person with lawful authority to take custody of the student, e.g., a police officer with a warrant or the person authorized by the Cabinet for Health and Family Services when the student is committed to the Cabinet or when the Cabinet is granted custody of the student by a court order. In such case, the student's parent shall be notified at the earliest opportunity.

When custody of a student is granted to the Cabinet by a court order as a result of dependency, neglect, or abuse, the Cabinet shall notify the Principal, Assistant Principal, or Guidance Counselor of the names of persons authorized to contact the child at school or remove the child from school grounds.

The notification shall be provided to the school by the Cabinet:

a. Verbally and documented in writing by the Principal, Assistant Principal, or Guidance Counselor on the day that a court order is entered and again on any day that a change is made with regard to persons authorized to contact or remove the child from school. The verbal notification shall occur on the next school day immediately following the day a court order is entered or a change is made if the court order or change occurs after the end of the current school day; and

b. By written document within ten (10) calendar days following a change of custody or change in contact or removal authority.

In addition, the Board authorizes emergency release of students for illness or other bona fide reasons, as determined by the Principal.

ATTENDANCE REQUIREMENTS

Compulsory Attendance

All children in the district who have entered kindergarten or who are between the ages of six (6), as of August 1, and eighteen (18), except those specifically exempted by statute, shall enroll and be in regular attendance in the schools to which they are assigned.

According to 704 KAR 5:060 Section 1, any five (5) year old child not otherwise subject to compulsory attendance laws, but who voluntarily enrolls in the primary school program at the beginning of the school year, may upon parental or guardian's written request be withdrawn from the program at any time within the first two (2) school calendar months. At the end of such trial period of time such a child shall be considered irrevocably entered into the primary school program for purposes of KRS 159:010 and 159:020.

Exemptions from Compulsory Attendance

The Board shall exempt the following from compulsory attendance:

1. A graduate from an accredited or approved 4-year high school;
2. A pupil who is enrolled in an approved private or parochial school;
3. A pupil who is less than seven (7) years old and in regular attendance in a private kindergarten nursery school;
4. A pupil whose physical or mental condition prevents or renders inadvisable attendance at school or application to study;
5. A pupil who is enrolled and in regular attendance in private, parochial, or church school programs for exceptional children; or;
6. A pupil who is enrolled and in regular attendance in a state-supported program for exceptional children;
7. A pupil who is being home schooled.

Physician's Statement Required

The Board, before granting an exemption for four (4) above, shall require a signed statement as required by law.

Instruction

Suitable home/hospital/institutional instruction shall be provided for students exempted under number 4.

4-H Activities

Participation of a student in 4-H activities which are regularly scheduled and under the supervision of a county extension agent or the designated 4-H club leader shall be considered school attendance.

Perfect Attendance Recognition

Attendance for all students will be calculated on the basis of tardies, half-day absences, or whole day absences. Perfect attendance recognition will be defined by the school.

Absences and Excuses – Notes Required

Students are required to attend regularly and punctually the school in which they are enrolled. Recording of absences and tardies shall be made in compliance with the requirements of 702 KAR 7:125. Within three (3) days of a student's return to school after any absence, they shall bring notes signed and dated by the parent/legal guardian/professional to the attendance office. Notes shall include phone numbers to assist attendance personnel in verifying information. **Once the total number of absence notes and tardy notes combined reaches seven (7), all other absences or tardies must have a physician's statement or other required verification to be excused or be approved as excused by the Principal.** If the note is not received within three (3) days after a student returns to school, the absence or tardy will be recorded as unexcused. Any student who becomes habitually truant (6 or more unexcused absences or tardies) will have all remaining parent notes applied to the most recent corresponding number of unexcused events.

A tardy is defined as any combination of sign-ins and sign-outs that result in a student missing 35% or less of a school day.

Excused Absences and Tardies – Parent/legal guardian notes

Parent/legal guardian notes expressing a reason will excuse an absence or tardy on seven (7) total occasions per year for a student. Each day absent or tardy would count towards the allotment of seven (7) notes.

Doctor Notes – Seven (7) medical notes from a physician, registered nurse practitioner, Physician's Assistant, dentist or mental health professional may be used for medical absences. An original note from the professional must be provided upon the student's return, even if the parent noted the appointment on the sign-in/out log at the time of check in/out. Faxed or e-notes are acceptable only if they originate from the medical professional's office.

Parents/legal guardians may be asked to submit a Medical Excuse Form for medical excuses after using 7 medical notes. The Medical Excuse Form is located in the back of the handbook or may be obtained from the attendance office at each school.

Parents of children with significant health issues which will result in more than seven (7) medical notes need to consult with the principal, counselor, or social worker. Students who suffer from significant illnesses may be eligible for a 504 plan which would modify attendance requirements. Parents of such children should contact the principal, guidance counselor, or social worker to discuss this option further.

Military Duty

- a. One (1) day prior to departure of parent/guardian called to active military duty. Note required prior to absence.
- b. One (1) day upon return of parent/guardian called from active military duty. Note required prior to absence.
- c. Visitation for up to ten (10) days with the student's parent, de facto custodian, or person with legal custody who, while on active military duty stationed outside of the country is granted rest and recuperation leave. Note required prior to absence.
- d. Documented Military Leave
- e. Ten (10) days for students attending basic training required by a branch of the United States Armed Forces.

Excessive submission of absence or tardy notes for any reason listed above may be referred to the principal for review and final determination.

Educational Enhancement Opportunity (EHO/EEO)

Students shall be granted an excused absence for up to ten (10) school days to pursue an educational enhancement opportunity determined by the Principal to be of significant educational value. This opportunity may include, but not be limited to, participation in an educational foreign exchange program or an intensive instructional, experiential, or performance program in one (1) of the core curriculum subjects of English, science, mathematics, social studies, foreign language, and the arts. Applications for an educational enhancement opportunity may be obtained from the attendance clerk at each school. **To request an absence to attend or participate in an educational activity, please complete an application form and return it to your school principal at least five (5) days prior to the absence.** Unless the Principal determines

that extenuating circumstances exist, requests for dates falling within State or District testing periods shall not be granted. The Principal's determination may be appealed to the Superintendent/designee whose decision may then be appealed to the Board under its grievance policy and procedures. Students receiving an excused absence under this section shall have the opportunity to make up school work missed and shall not have their class grades adversely affected for lack of class attendance or class participation due to the excused absence. The Principal has the right to request additional documentation.

Unexcused Absences

All other absences, **including suspensions**, shall be considered unexcused and no make-up work shall be allowed without approval of the principal. Students who are legally truant (three (3) unexcused absences and/or tardies) will not be allowed to obtain or maintain parking privileges on school property. Students will also lose their parking privileges if they provide transportation for a student who "skips" school or if they skip school themselves. **Truancy will also be considered when determining a student's eligibility for participation in school activities including, but not limited to, athletics, dances, prom, award ceremonies, graduation ceremony, etc.** Students who are eighteen (18) or older shall be subject to the same criteria for excused absences as all other students. Supporting documentation for any absence (i.e. verification of medical or dental appointments) will be required by the school staff. Failure to provide us documentation will result in the absence being coded as unexcused. Check-outs for lunch are not permitted under any circumstances. Truant students who are eighteen (18) or older are subject to prosecution in Woodford District Court.

Truancy

Kentucky's compulsory attendance law states that any student enrolled in public school who has attained the age of six (6), but has not reached his/her twenty-first (21st) birthday, who has been absent from school without a valid excuse for three (3) days or more, or tardy without a valid excuse on three (3) days or more, is a truant. A student who has been reported as a truant two (2) or more times (a total of six days) is a habitual truant. The following procedure has been developed by staff of the Woodford County Board of Education, the Woodford District Judges Office, the Woodford County Attorney, the Cabinet for Health and Family Services and the Court Designated Workers Office for use in addressing truancy in Woodford County. For purposes of establishing a student's status as a truant, a student's attendance record is cumulative for an entire year. When students transfer from one Kentucky district to another, attendance information from the previous district shall become part of their official attendance record for that school year.

1. School staff will automatically send letters to parents upon the 3rd and 6th incidence of unexcused absence or tardy notifying them of the truancy. The purpose of the 3rd incidence letter is to make the parent(s) aware of their child's truancy and provide an opportunity for the parent to intervene.
2. The purpose of the 6th incidence letter is to provide the parent with a final notice regarding their child's habitual truancy and advising them that the student will be referred to the Director of Pupil Personnel/Assistant to the DPP for further action if the student continues to accumulate unexcused absences or tardies. Upon receipt of any letter, parents should contact the Principal, counselor, or social worker with any questions regarding their child's attendance and truancy.
3. Once a student has accumulated six (6) unexcused absences and/or tardies and is habitually truant under KRS 159.150, the school counselor or social worker will make contact with the parent. School staff will make referrals to the Cabinet for Families and Children, as well as local police, if parental neglect or abuse is indicated. If the student continues to accumulate unexcused absences and/or tardies, the staff person who conducted the assessment will refer the student and family to the Director of Pupil Personnel/Assistant to the DPP for further intervention if the student continues to accumulate unexcused absences and tardy events.
4. Once a student is referred for truancy, information about the issues surrounding the truancy will be made available to appropriate school personnel on a need-to-know basis. The Director of Pupil Personnel/Assistant to the DPP may intervene by any or all of the following means:
 - Visiting the homes of truant students and their families, and/or
 - Students may be charged with Habitual Truancy in either Woodford Family Court or Woodford Juvenile Court, and/or
 - Students between the ages of eighteen (18) to twenty-one (21) may be referred to the County Attorney for processing as an adult offender, and/or
 - Parents/guardians of any truant student may be criminally charged with unlawful transaction with a minor in Woodford District Court;
 - Parents/guardians of any truant student may be civilly charged with educational neglect in Woodford Family Court;
 - Parents/guardians may be reported to the Cabinet for Health and Family Services and/or the Versailles Police Department if neglect or abuse is indicated.
5. The Director of Pupil Personnel or Assistant to the DPP will ascertain the causes of irregular attendance through documented contact with the custodian of the student, seek the elimination of these causes, will acquaint the school with the home conditions of a habitual truant, and the home with the work and advantages of the school. He/she will also attempt to visit the homes of students who are reported to be in need of books, clothing or parental care. Information obtained will be shared with appropriate school and district personnel on a need-to-know basis. The Director of Pupil Personnel/Assistant to the DPP will be responsible for following student attendance and reporting violations to Versailles Police, Cabinet for Health and Family Services, the Woodford County Attorney and/or Woodford District Court throughout the school year.

While we are not recommending any changes to our current truancy policies, we will modify some of our practices within the policy to ensure that COVID-19 related absences do not negatively impact any family. In addition, some of our staff assigned to work with truancy will shift their focus to mental health support for our students upon re-entry.

Driver's License Revocation

Students who are sixteen (16) or seventeen (17) years old who become academically deficient, or deficient in attendance, shall be reported to the Transportation Cabinet for driver's license, permit or driving privilege revocation. Academic and attendance deficiencies for students ages sixteen (16) or seventeen (17) enrolled in regular, alternative, part-time, and special education programs shall be defined as follows:

- They shall be deemed academically deficient if they have not received passing grades in at least four (4) courses, or the equivalent of four (4) courses, taken the preceding semester.
- They shall be deemed deficient in attendance when they drop out of school or accumulate nine (9) unexcused absences in a class/classes for the preceding semester. Suspensions shall be considered unexcused absences.

Students whose driving permits are revoked, but later meet the statutory standards for reinstatement, must then apply to the Director of Pupil Personnel to have their standing confirmed. The district shall make the required report to the appropriate agency.

KarSare Systems

For a Cleaner Future

How Clean is Your Water?



We Can Help!
Call for a Free Water Analysis
(859) 873-7909

Authorized Kinetico Dealer

Systems Priced for Everyone

Drinking Water Systems

Home Water Systems

Farms, Wells, Cisterns

Visit us at karsare.com



EMERGENCY

Emergencies Don't Wait

When an emergency strikes, go to the place where your healthcare heroes are ready to care for everything from broken bones to chest pain.

We have been working hard to ensure our hospital—including our Emergency Department—is safe for everyone.

Every minute matters in an emergency. You can have greater peace of mind knowing the right care is close to home when you need it. **#YourHealthOurHeroes.**

Learn more at

BluegrassCommunityHospital.com

 **BLUEGRASS**
COMMUNITY HOSPITAL

This facility and its affiliates comply with applicable Federal civil rights laws and does not discriminate on the basis of race, color, national origin, age, disability, or sex.

ATENCIÓN: si habla español, tiene a su disposición servicios gratuitos de asistencia lingüística. Llame al 1-859-873-3111.

注意:如果您使用繁體中文, 您可以免費獲得語言援助服務。請致電 1-859-873-3111。